



### News for Senior Citizens

By WALLY FORTIN  
DIRETOR

Hi there! Want to hear some-vice to you is to hustle on down thing good? Well, draw up a to the Center first thing, if you chair, and next year catch the last few seats the following:

To begin with, there's good late and the seats all gone. By now, starting this Monday, we will be serving a delicious, nutritious lunch here at the Center Monday, Tuesday, Wednesday and Friday noon. This is showing close to 200 colored lunch may be eaten here in the sides of our Canada trip this Dinner Club, or taken home. Now, how did this all come about? Well, let me give you the low-down.

As you know, our Hot-Meal program is a co-sponsored deal, coming Wednesday afternoon. Getting into our regular activities for awhile, we had another fine attendance at the Pire Pendell. Because this program has become a popular success, Pendell and Nell Lawrence, occupational coordinator, approached me on the possibility of starting a lunch program. This sounded great to me, especially when they mentioned that it was to be in mid-November. There are funds available for this type of program. The program would include a certified home economics teacher, and would include new kitchen equipment, such as stainless steel counters, and sink, and many other important features.

Now all this could be done provided the town would allocate funds to purchase the new kitchen, and provide the Board of Directors, which has been most generous in supporting the Senior Citizens, with the necessary funds to get the program started. I mentioned this to the town, and we will be getting the necessary funds to get the program started.

Now this exciting bit of news for you, remember how we had mentioned a few times about having a Christmas dinner at the Center? Well, Georgia Vince, our fund raising chairman, and her staff of volunteers, are planning to have a Christmas dinner at the Center on Monday morning, and we will be serving a delicious lunch at the Center on Monday morning.

There were many many beautiful and wonderful people to buy, and both Georgia and myself can't thank all you folks enough for your splendid contributions. Also for coming in to help them. For those who took an active part in either donating, or buying, I'm sure you'll be happy to hear that by noon time, we were just about sold out, and between the bazzar and the selling of candy houses, you folks made \$200. How about that?

We also had a few prizes, and the winners were Miss Mary Hammy, a silver dish set; Tom O'Neill, the electric mixer; and Alice Shorette, the knitted pillow.

Radio City Trip  
You know I mentioned a trip to Radio City, and we started registering at 8 a.m. Monday. I arrived at about 7:30 a.m., and was greeted by about 20 people, and so for the next couple of hours they kept coming in, and then a waiting list, so my ad-

### 46th District Glassman Replies to Charge Of Poor Council Attendance

Abraham Glassman, Democratic candidate for state representative from the 46th district, has responded to a recent statement of Republican Mayor Howard E. Pitts with regard to his attendance at council meetings.

Glassman said, "It is amazing that after three years on the South Windsor Town Council, I finally learn that our Republican mayor has kept a personal record of attendance at work sessions which cannot be authenticated. I challenge our mayor to produce a record of the three year attendance at work sessions, or does he, just have one for this year because it is an election year?"

The candidate maintained that the tactics of the Republican Party is to smear the Democratic Party as "merely a smoke screen" to cover up what he termed "failures" of the Republican Party.

Donnelly, in his 46th district representation, he questioned Donnelly's attendance at the special session of the state legislature in July 1969.

Glassman said "It is easy to claim that you voted a certain way when a voice vote was taken, but you missed 20% of all roll call votes—where each legislator's vote is recorded. I challenge our mayor to produce a record of the three years' attendance at work sessions, or does he, just have one for this year because it is an election year?"

Donnelly has announced the results of the public opinion poll he has been conducting during the past three weeks.

On the three issues polled, the results were: State Income Tax: 86 per cent opposed—6 per cent for and 8 per cent undecided.

RT expansion: 100 per cent opposed to any expansion or a new highway.

Open date stamping of perishable foods: 84 per cent undecided, and 16 per cent agreed to stamping.

Donnelly himself opposed the adoption of a state income tax, opposed expansion of RT, and opposed a new highway and favored expansion of RT. He also pledged to submit a date stamping bill to the next legislature.

Annual session  
Donnelly has called for all citizens of Connecticut to support the proposed constitutional amendment that will provide for annual sessions of the State Legislature in the Tuesday election.

He said that with an annual session, Connecticut would be able to operate on a budget cycle and this would "unquestionably lead to a more efficient state government."

Plaidits  
Donnelly has expressed his appreciation to workers in the district who have assisted him during his campaign.

He publicly thanked Robert O'Connell and Charles Regalado who are members of the public relations aspects of the campaign; Town Chairman Roy C. Cotes and Donald Larnes; Mrs. Jeanne Engle and Mrs. Jackie Lowery, who addressed correspondents; Roger Cottle and John Schaunnessy, drivers; and Richard Clinton, Justin

### Sheinwoold on Bridge

FOLLOW TRADITION IN PLAY TONIGHT  
BY ALFRED SHEINWOOLD

If you haven't been looking at the calendar lately, tonight is Halloween, and you can expect the neighborhood children to ring your bell seven or eight times to pose the traditional demand: "Trick or treat!" If you happen to be playing bridge tonight, you can make the same demand on your opponents.

Neither side vulnerable. North dealer. Three of opening lead—Three of hearts. West opens the bidding with 1 NT. East South West  
2 NT Pass 3 Pass  
4 Pass 4 NT Pass  
5 Pass 6 All Pass

West opens the bidding with 1 NT. East South West  
2 NT Pass 3 Pass  
4 Pass 4 NT Pass  
5 Pass 6 All Pass

What do you say?  
Answer: "Bid three hearts. If you get an even chance for your contract."

Careful Preparation  
Careful preparation is necessary to reach the ace of hearts, and lead the queen and jack to be spades. If West happens to be an honor-crusher, he may put up the king. If not, play dummy's ace. The king may fall, and your problems will be over.

If nothing delicious happens, play another heart, and lead diamonds and ruff dummy's last diamond. Now lead a spade, announcing "Trick or treat!" You have given them

### THEATER TIME SCHEDULE

**SATURDAY**  
Burnside—Little Fauss & Big Hally, 7:30, 9:30.  
East Hartford Drive-In—What Love Doctors, 7:30. The Phantom Film, 9:30.  
East Windsor Drive-In—What Love Doctors, 7:30. The Phantom Film, 9:30.  
East Windsor Drive-In—What Love Doctors, 7:30. The Phantom Film, 9:30.  
East Windsor Drive-In—What Love Doctors, 7:30. The Phantom Film, 9:30.  
East Windsor Drive-In—What Love Doctors, 7:30. The Phantom Film, 9:30.

**SUNDAY**  
Burnside—Little Fauss & Big Hally, 2:30, 4:30, 6:30, 8:30.  
East Hartford Drive-In—What Love Doctors, 7:30. The Phantom Film, 9:30.  
East Windsor Drive-In—What Love Doctors, 7:30. The Phantom Film, 9:30.  
East Windsor Drive-In—What Love Doctors, 7:30. The Phantom Film, 9:30.  
East Windsor Drive-In—What Love Doctors, 7:30. The Phantom Film, 9:30.

### 51st District Dorothy Miller Chides Ahearn

Incumbent Republican candidate for 51st District representative, Mrs. Dorothy Miller, has chided her Democratic opponent, Al Ahearn, for his record in office.

Miller said she will press the state highway department to correct the road conditions in the Coventry near Lieceke Park Beach.

The project has been assigned to the state highway department. Miller said that work on this project is already under way.

The project has been assigned to the state highway department. Miller said that work on this project is already under way.

The project has been assigned to the state highway department. Miller said that work on this project is already under way.

### Final Thrust Ahearn for State

BAY BRIDGE, N.J. (AP)—The scheduled test of a space program rocket at Cape Canaveral, Fla., was carried out Friday when a Saturn 5 booster was successfully launched.

The second-stage booster, the S-115, developed a total thrust of 1.1 million pounds during the firing of 6 minutes, 14 seconds.

PARIS (AP)—Fashion designer Pierre Cardin claims that he makes more on the sale of his "space" than on his haute couture model dress.

"Every haute couture model I sell is a dead loss because the overhead and taxes are so tremendous," Cardin said on a television program.

### Little Fauss and Big Hally are not your father's heroes.

**LITTLE FAUSS AND BIG HALSY**  
ROBERT MICHAEL RANDFORD POLLARD  
PANAVISION COLOR

**BURNSIDE**  
11:30 - 1:30  
FREE PARKING - EAST SIDE  
528-3333

**THE LOVE DOCTORS**  
THE PLAYMATES  
COORUPTON

### MHS STUDENTS NO SCHOOL TUES!

AND TO CELEBRATE  
**David's**  
IS OPENING ITS DOOR AGAIN TO THE "UNDER 21 SET" LIKE OLD TIMES.  
MONDAY, NOV. 2nd — 8:30 P.M.  
BE THERE!  
MANCHESTER PARADE — 648-2333  
Curious Parents Are Invited . . .

**BONANZA MONDAY SPECIAL**  
Rib Eye Special  
Baked Potato Tossed Salad  
Reg. \$1.59 **\$1.19**

**BONANZA STEAK HOUSE**  
287 WEST MIDDLE TPKE., MANCHESTER

### New Haven Hospital Hikes Rates

NEW HAVEN (AP)—St. Raphael's Hospital here announced increases in hospital charges and room rates Friday.

The average daily cost of a bed in the hospital will rise by about \$4.

Sister Louise Anthony, administrator of the hospital, said the hospital's minimum hourly wage level will rise from \$2.15 to \$2.50 in two steps over the next four months, providing a minimum wage level of \$10 a week on March 1, 1971. Increased fringe benefits also included, she said.

The new room charges will raise the cost of multiple beds from \$45 to \$65 a week, and of single rooms from \$30 to \$45 a week. Private room charges, formerly \$15 a week, will now be \$27.50.

The room rate increases follow similar increases in hospital rates announced Sept. 24 by Yale-New Haven Hospital and the Griffin Hospital in Derby.

### Church School In Norwalk To Remain Open

NORWALK (AP)—St. Jerome's Elementary school may remain open after all. School Board Chairman Abraham C. Deans said Friday.

Deans said earlier reports that the school definitely would be closed were erroneous, or at least very premature.

Although it was reported earlier by Father Martin Hitchcock that St. Jerome's School in Norwalk is closing in November, 1971, the St. Jerome's School Board wishes to announce that the school will remain open after all.

The Rev. Hitchcock had said earlier Friday that the school would close because of increasing operational and instructional costs.

A school council recently declared state aid to parochial schools unconstitutional, touching off widespread predictions that the school would be forced to close.

### Angela Names Lindsay, City In Cruelty Suit

NEW YORK (AP)—Layoffs for Angela Davis, the black militant imprisoned here and fighting extradition to California, where she faces murder and kidnap charges, Friday filed a \$200,000 lawsuit claiming that the federal government violated the Eighth Amendment.

The suit, filed in federal court, names Mayor John Lindsay and Correction Department Commissioner James J. O'Connell as defendants.

The Rev. Hitchcock had said earlier Friday that the school would close because of increasing operational and instructional costs.

A school council recently declared state aid to parochial schools unconstitutional, touching off widespread predictions that the school would be forced to close.

### Halloween Fete For State Kids

MANCHESTER (AP)—The annual Halloween Fete for state children from 6 to 8 years of age who are residents at the State Receiving Home in Warehouse Point will be held this afternoon at St. Mary's Episcopal Church.

The costume party complete with entertainment including a magician is being sponsored by the Davidson Leventhal Ten Fashion Board.

State School Get \$133,168 U.S. Grant  
WASHINGTON (AP)—The U.S. Department of Health, Education and Welfare has given a grant of \$133,168 to the Connecticut School for Boys in Meriden and the Long Lane School in Middletown, Rep. John S. Monagan, D-Conn., announced Friday.

Changan said the awards are for programs concerning delinquent children.

### Tigers To Play Exhibition Game

The Bolton Tigers will play an exhibition football game tomorrow at 1:30 p.m. against the Gildon Wells School of Nipic Rd. in Glastonbury.

Directions to the school, as given by a football association official, go toward Glastonbury on the Manchester Rd. past the intersection of 94. The road swings up left past the school. Continue on the road until it crosses Nipic Rd. Turn right on Nipic Rd. and continue to the school.

Steele Valt  
Republican Congressional candidate Robert Steele will motorcade through Bolton Sunday afternoon. It was announced today by his Bolton coordinator Robert Moran.

Steele plans to stop at the Green in front of Community Hall at 4:15 to meet townpeople.

Tiger Auxiliary  
The newly formed Women's Auxiliary of the Bolton football team will meet Monday at the home of Mrs. Richard Moran on Tucker Pond Road.

The meeting will begin at 8:15 p.m. and is open to any women wishing to join. The fee is not restricted to mothers of players.

At its organizational meeting last week, the following officers were named: President, Mary Moran; vice president, Joan Moran; Virginia Assard, secretary, and Mary Groves, treasurer.

Correction  
The football dinner-dance to be held at Flannery's will not be attended by members of the team, as announced in this column yesterday. The dinner will be held on Nov. 13 from 7 p.m. to 1 a.m.

Senior Citizens  
The Senior Citizens will meet on Wednesday at 1:30 at Community Hall. There will be refreshments, card playing and door prizes.

What's Hot  
The Women's Auxiliary of the Bolton Fire department will hold a whist on Nov. 13

### Bonds Rally, End in Gain After Decline

NEW YORK (AP)—After declining early in the past week, most sectors of the bond market participated in a spirited rally and closed with net gains, the investment banking firm of Boston Brothers reported.

The government market was the largest price improver, with the largest price increase in Treasury bills. The two new refunding issues advanced to premiums of over one and a quarter points in when issued trading.

The short term market was largely steady during the past week. Three-month Treasury bill rates rose slightly early in the week, but fluctuated little thereafter. Both Federal funds and Euro-dollar rates traded within narrow ranges.

The tone in the corporate market improved markedly as the week progressed. New issue yields are now at about the mid-point of the range for this year. Seasoned corporate issues were mixed.

Postpayments of several new issues this week resulted in a decrease in the October corporate bond volume to \$2.6 billion and an increase in the November calendar to \$2.9 billion.

The coming week's extremely large volume of new issues is being watched for both definitely and tentative scheduled corporate issues of about 30 per cent of the total in August 1969.

### Arts Awards Presented, Exhibit Open to Public

Mrs. Jacqueline Novak with her prize-winning watercolor, "Flower Pots."

MANCHESTER (AP)—The annual Arts Awards ceremony was held at the Manchester Hotel here Friday. Mrs. Jacqueline Novak of 110 West Main St. won the award for her watercolor, "Flower Pots," which she painted in oil.

The award ceremony was held at the Manchester Hotel here Friday. Mrs. Jacqueline Novak of 110 West Main St. won the award for her watercolor, "Flower Pots," which she painted in oil.

The award ceremony was held at the Manchester Hotel here Friday. Mrs. Jacqueline Novak of 110 West Main St. won the award for her watercolor, "Flower Pots," which she painted in oil.

### Steele To Visit Town Sunday

MANCHESTER (AP)—Republican Second Congressional District candidate Robert Steele will visit town at 4 p.m. tomorrow. He will be speaking at the Andover Elementary School grounds, or in the event of bad weather, at the town hall.

Republican town chairman John Storm and local campaign coordinator Y. Anson are in charge of arrangements.

Manchester Evening Herald Andover correspondent Anna Prins, Tel. 745-9597.

### Manuscript Witness Judged Insane

LOS ANGELES (AP)—Charles "Tex" Watson, accused of leading two murder mistries in which Sharon Tate and her three other daughters were murdered, has been declared insane and in danger of dying.

A judge ordered Watson committed to a state mental hospital and said Friday he would not be tried until he regains his sanity.

Dr. Marcus Crahan, one of three psychiatrists reporting on Watson in the last week has been accused of leading two murder mistries in which Sharon Tate and her three other daughters were murdered, has been declared insane and in danger of dying.

A judge ordered Watson committed to a state mental hospital and said Friday he would not be tried until he regains his sanity.

### Three Arrested On Charges Of Traffic Offenses

PERSONALITY arrested two persons this morning on motor vehicle charges.

Raymond Howe, 24, RFD 2, Conventy was arrested on charges of driving without a license and driving on a suspended license.

Donald Kehaya, 21, 42 Spruce St., Manchester was issued a summons for unnecessary noise with a motor vehicle, after allegedly squealing the tires on his vehicle.

Both were scheduled to appear in Rockville Circuit Court on Nov. 17.

Also on the Nov. 17 court docket are Verdel Nash, 27, 103 Union St., Rockville, charged with Parham, 45, 87 Talcott Ave., Rockville, who was charged with driving without a license and driving on a suspended license.

Other area police activities: Patrick Tompkins, 31, of Wilimonty was charged with driving without a license and driving on a suspended license.

Old shower curtains can be used to cover outdoor furniture or a grill during the winter months.

### PUMPKIN SUNDAY

Holiday spicy pumpkin sauce pours over pumpkin cream, topped with real whipped cream and big red cherry.

### Shady Glen Dairy Stores

TWO CONVENIENT LOCATIONS  
OPEN DAILY AND SUN.; PARADE BRANCH—Mon. thru Sat.  
(John and Bernice Ring)

### Munson's Candy Kitchen

Where Quality Candy is Made Fresh Daily  
Choose From Over 200 Varieties

For goodness sake—try our  
**HOLLANES HONEYCOMB PUFF**  
A light, honeycomb candy with a rich molasses taste. It's an old-fashioned treat in your mouth taste treat.

### CLIP THESE COUPONS AND SAVE FOR SUNDAY ONLY

**DRUGS AT LOW PRICES**

**CLIP THESE COUPONS AND SAVE FOR SUNDAY ONLY**

**DRUGS AT LOW PRICES**

### TO VOTERS AT BUCKLEY AND HIGHLAND PARK

State Representative  
Fran Mahoney  
Cordially Invites  
All Voters of the  
19th Assembly District  
(Buckley, Nathan Hale and Highland Park Schools)

To an Open House at His Home  
19 Hamlin Street  
Sunday, November 1, 1970  
From 2:00 - 4:00 P.M.

### COUPON

**VICKS FORMULA 44**  
3 1/2-oz. Size  
Reg. \$1.89  
**79¢**

**ROUX**  
Popular Shades  
**69¢**

**100 plus 30 FREE**

**DRISTAN TABLETS**  
24s  
\$1.39 Size **99¢**

**INSULIN**  
U-40, Reg. \$1.48  
**89¢**  
U-80, Reg. \$2.83  
**\$1.78**  
Reg. & NPH

**ANGELIQUE BLACK SATIN SPRAY**  
3 oz.  
\$5.00 Value  
**\$1.27**

Manchester Evening Herald

PUBLISHED BY THE HERALD PUBLISHING CO., INC. 15 Beach Street, Manchester, Conn. 06108

Subscription Rates: Single Copy 10c, 10 for \$1.00, 12 for \$1.20, 3 for \$3.00, 6 for \$6.00, 12 for \$12.00

Published Every Evening Except Sundays and Holidays. Entered at the Post Office at Manchester, Conn., as Second Class Mail Matter.

The Associated Press is a service organization which provides news dispatches to its members.

The Herald Printing Company, Inc., is a service organization which provides printing services to its members.

Member Audit Bureau of Circulations. Display advertising closing hours: Monday - 10 a.m. to 6 p.m., Tuesday - 10 a.m. to 6 p.m., Wednesday - 10 a.m. to 6 p.m., Thursday - 10 a.m. to 6 p.m., Friday - 10 a.m. to 6 p.m., Saturday - 10 a.m. to 6 p.m.

Member Audit Bureau of Circulations. Display advertising closing hours: Monday - 10 a.m. to 6 p.m., Tuesday - 10 a.m. to 6 p.m., Wednesday - 10 a.m. to 6 p.m., Thursday - 10 a.m. to 6 p.m., Friday - 10 a.m. to 6 p.m., Saturday - 10 a.m. to 6 p.m.

Member Audit Bureau of Circulations. Display advertising closing hours: Monday - 10 a.m. to 6 p.m., Tuesday - 10 a.m. to 6 p.m., Wednesday - 10 a.m. to 6 p.m., Thursday - 10 a.m. to 6 p.m., Friday - 10 a.m. to 6 p.m., Saturday - 10 a.m. to 6 p.m.

Member Audit Bureau of Circulations. Display advertising closing hours: Monday - 10 a.m. to 6 p.m., Tuesday - 10 a.m. to 6 p.m., Wednesday - 10 a.m. to 6 p.m., Thursday - 10 a.m. to 6 p.m., Friday - 10 a.m. to 6 p.m., Saturday - 10 a.m. to 6 p.m.

Member Audit Bureau of Circulations. Display advertising closing hours: Monday - 10 a.m. to 6 p.m., Tuesday - 10 a.m. to 6 p.m., Wednesday - 10 a.m. to 6 p.m., Thursday - 10 a.m. to 6 p.m., Friday - 10 a.m. to 6 p.m., Saturday - 10 a.m. to 6 p.m.

Member Audit Bureau of Circulations. Display advertising closing hours: Monday - 10 a.m. to 6 p.m., Tuesday - 10 a.m. to 6 p.m., Wednesday - 10 a.m. to 6 p.m., Thursday - 10 a.m. to 6 p.m., Friday - 10 a.m. to 6 p.m., Saturday - 10 a.m. to 6 p.m.

Member Audit Bureau of Circulations. Display advertising closing hours: Monday - 10 a.m. to 6 p.m., Tuesday - 10 a.m. to 6 p.m., Wednesday - 10 a.m. to 6 p.m., Thursday - 10 a.m. to 6 p.m., Friday - 10 a.m. to 6 p.m., Saturday - 10 a.m. to 6 p.m.

Member Audit Bureau of Circulations. Display advertising closing hours: Monday - 10 a.m. to 6 p.m., Tuesday - 10 a.m. to 6 p.m., Wednesday - 10 a.m. to 6 p.m., Thursday - 10 a.m. to 6 p.m., Friday - 10 a.m. to 6 p.m., Saturday - 10 a.m. to 6 p.m.

Member Audit Bureau of Circulations. Display advertising closing hours: Monday - 10 a.m. to 6 p.m., Tuesday - 10 a.m. to 6 p.m., Wednesday - 10 a.m. to 6 p.m., Thursday - 10 a.m. to 6 p.m., Friday - 10 a.m. to 6 p.m., Saturday - 10 a.m. to 6 p.m.

Member Audit Bureau of Circulations. Display advertising closing hours: Monday - 10 a.m. to 6 p.m., Tuesday - 10 a.m. to 6 p.m., Wednesday - 10 a.m. to 6 p.m., Thursday - 10 a.m. to 6 p.m., Friday - 10 a.m. to 6 p.m., Saturday - 10 a.m. to 6 p.m.

Member Audit Bureau of Circulations. Display advertising closing hours: Monday - 10 a.m. to 6 p.m., Tuesday - 10 a.m. to 6 p.m., Wednesday - 10 a.m. to 6 p.m., Thursday - 10 a.m. to 6 p.m., Friday - 10 a.m. to 6 p.m., Saturday - 10 a.m. to 6 p.m.

Member Audit Bureau of Circulations. Display advertising closing hours: Monday - 10 a.m. to 6 p.m., Tuesday - 10 a.m. to 6 p.m., Wednesday - 10 a.m. to 6 p.m., Thursday - 10 a.m. to 6 p.m., Friday - 10 a.m. to 6 p.m., Saturday - 10 a.m. to 6 p.m.

Member Audit Bureau of Circulations. Display advertising closing hours: Monday - 10 a.m. to 6 p.m., Tuesday - 10 a.m. to 6 p.m., Wednesday - 10 a.m. to 6 p.m., Thursday - 10 a.m. to 6 p.m., Friday - 10 a.m. to 6 p.m., Saturday - 10 a.m. to 6 p.m.

Member Audit Bureau of Circulations. Display advertising closing hours: Monday - 10 a.m. to 6 p.m., Tuesday - 10 a.m. to 6 p.m., Wednesday - 10 a.m. to 6 p.m., Thursday - 10 a.m. to 6 p.m., Friday - 10 a.m. to 6 p.m., Saturday - 10 a.m. to 6 p.m.

Member Audit Bureau of Circulations. Display advertising closing hours: Monday - 10 a.m. to 6 p.m., Tuesday - 10 a.m. to 6 p.m., Wednesday - 10 a.m. to 6 p.m., Thursday - 10 a.m. to 6 p.m., Friday - 10 a.m. to 6 p.m., Saturday - 10 a.m. to 6 p.m.

Member Audit Bureau of Circulations. Display advertising closing hours: Monday - 10 a.m. to 6 p.m., Tuesday - 10 a.m. to 6 p.m., Wednesday - 10 a.m. to 6 p.m., Thursday - 10 a.m. to 6 p.m., Friday - 10 a.m. to 6 p.m., Saturday - 10 a.m. to 6 p.m.

Member Audit Bureau of Circulations. Display advertising closing hours: Monday - 10 a.m. to 6 p.m., Tuesday - 10 a.m. to 6 p.m., Wednesday - 10 a.m. to 6 p.m., Thursday - 10 a.m. to 6 p.m., Friday - 10 a.m. to 6 p.m., Saturday - 10 a.m. to 6 p.m.

Member Audit Bureau of Circulations. Display advertising closing hours: Monday - 10 a.m. to 6 p.m., Tuesday - 10 a.m. to 6 p.m., Wednesday - 10 a.m. to 6 p.m., Thursday - 10 a.m. to 6 p.m., Friday - 10 a.m. to 6 p.m., Saturday - 10 a.m. to 6 p.m.

Member Audit Bureau of Circulations. Display advertising closing hours: Monday - 10 a.m. to 6 p.m., Tuesday - 10 a.m. to 6 p.m., Wednesday - 10 a.m. to 6 p.m., Thursday - 10 a.m. to 6 p.m., Friday - 10 a.m. to 6 p.m., Saturday - 10 a.m. to 6 p.m.

Member Audit Bureau of Circulations. Display advertising closing hours: Monday - 10 a.m. to 6 p.m., Tuesday - 10 a.m. to 6 p.m., Wednesday - 10 a.m. to 6 p.m., Thursday - 10 a.m. to 6 p.m., Friday - 10 a.m. to 6 p.m., Saturday - 10 a.m. to 6 p.m.

Member Audit Bureau of Circulations. Display advertising closing hours: Monday - 10 a.m. to 6 p.m., Tuesday - 10 a.m. to 6 p.m., Wednesday - 10 a.m. to 6 p.m., Thursday - 10 a.m. to 6 p.m., Friday - 10 a.m. to 6 p.m., Saturday - 10 a.m. to 6 p.m.

Member Audit Bureau of Circulations. Display advertising closing hours: Monday - 10 a.m. to 6 p.m., Tuesday - 10 a.m. to 6 p.m., Wednesday - 10 a.m. to 6 p.m., Thursday - 10 a.m. to 6 p.m., Friday - 10 a.m. to 6 p.m., Saturday - 10 a.m. to 6 p.m.

Member Audit Bureau of Circulations. Display advertising closing hours: Monday - 10 a.m. to 6 p.m., Tuesday - 10 a.m. to 6 p.m., Wednesday - 10 a.m. to 6 p.m., Thursday - 10 a.m. to 6 p.m., Friday - 10 a.m. to 6 p.m., Saturday - 10 a.m. to 6 p.m.

Member Audit Bureau of Circulations. Display advertising closing hours: Monday - 10 a.m. to 6 p.m., Tuesday - 10 a.m. to 6 p.m., Wednesday - 10 a.m. to 6 p.m., Thursday - 10 a.m. to 6 p.m., Friday - 10 a.m. to 6 p.m., Saturday - 10 a.m. to 6 p.m.

Manchester Evening Herald

PUBLISHED BY THE HERALD PUBLISHING CO., INC. 15 Beach Street, Manchester, Conn. 06108

Subscription Rates: Single Copy 10c, 10 for \$1.00, 12 for \$1.20, 3 for \$3.00, 6 for \$6.00, 12 for \$12.00

Published Every Evening Except Sundays and Holidays. Entered at the Post Office at Manchester, Conn., as Second Class Mail Matter.

The Associated Press is a service organization which provides news dispatches to its members.

The Herald Printing Company, Inc., is a service organization which provides printing services to its members.

Member Audit Bureau of Circulations. Display advertising closing hours: Monday - 10 a.m. to 6 p.m., Tuesday - 10 a.m. to 6 p.m., Wednesday - 10 a.m. to 6 p.m., Thursday - 10 a.m. to 6 p.m., Friday - 10 a.m. to 6 p.m., Saturday - 10 a.m. to 6 p.m.

Member Audit Bureau of Circulations. Display advertising closing hours: Monday - 10 a.m. to 6 p.m., Tuesday - 10 a.m. to 6 p.m., Wednesday - 10 a.m. to 6 p.m., Thursday - 10 a.m. to 6 p.m., Friday - 10 a.m. to 6 p.m., Saturday - 10 a.m. to 6 p.m.

Member Audit Bureau of Circulations. Display advertising closing hours: Monday - 10 a.m. to 6 p.m., Tuesday - 10 a.m. to 6 p.m., Wednesday - 10 a.m. to 6 p.m., Thursday - 10 a.m. to 6 p.m., Friday - 10 a.m. to 6 p.m., Saturday - 10 a.m. to 6 p.m.

Member Audit Bureau of Circulations. Display advertising closing hours: Monday - 10 a.m. to 6 p.m., Tuesday - 10 a.m. to 6 p.m., Wednesday - 10 a.m. to 6 p.m., Thursday - 10 a.m. to 6 p.m., Friday - 10 a.m. to 6 p.m., Saturday - 10 a.m. to 6 p.m.

Member Audit Bureau of Circulations. Display advertising closing hours: Monday - 10 a.m. to 6 p.m., Tuesday - 10 a.m. to 6 p.m., Wednesday - 10 a.m. to 6 p.m., Thursday - 10 a.m. to 6 p.m., Friday - 10 a.m. to 6 p.m., Saturday - 10 a.m. to 6 p.m.

Member Audit Bureau of Circulations. Display advertising closing hours: Monday - 10 a.m. to 6 p.m., Tuesday - 10 a.m. to 6 p.m., Wednesday - 10 a.m. to 6 p.m., Thursday - 10 a.m. to 6 p.m., Friday - 10 a.m. to 6 p.m., Saturday - 10 a.m. to 6 p.m.

Member Audit Bureau of Circulations. Display advertising closing hours: Monday - 10 a.m. to 6 p.m., Tuesday - 10 a.m. to 6 p.m., Wednesday - 10 a.m. to 6 p.m., Thursday - 10 a.m. to 6 p.m., Friday - 10 a.m. to 6 p.m., Saturday - 10 a.m. to 6 p.m.

Member Audit Bureau of Circulations. Display advertising closing hours: Monday - 10 a.m. to 6 p.m., Tuesday - 10 a.m. to 6 p.m., Wednesday - 10 a.m. to 6 p.m., Thursday - 10 a.m. to 6 p.m., Friday - 10 a.m. to 6 p.m., Saturday - 10 a.m. to 6 p.m.

Member Audit Bureau of Circulations. Display advertising closing hours: Monday - 10 a.m. to 6 p.m., Tuesday - 10 a.m. to 6 p.m., Wednesday - 10 a.m. to 6 p.m., Thursday - 10 a.m. to 6 p.m., Friday - 10 a.m. to 6 p.m., Saturday - 10 a.m. to 6 p.m.

Member Audit Bureau of Circulations. Display advertising closing hours: Monday - 10 a.m. to 6 p.m., Tuesday - 10 a.m. to 6 p.m., Wednesday - 10 a.m. to 6 p.m., Thursday - 10 a.m. to 6 p.m., Friday - 10 a.m. to 6 p.m., Saturday - 10 a.m. to 6 p.m.

Member Audit Bureau of Circulations. Display advertising closing hours: Monday - 10 a.m. to 6 p.m., Tuesday - 10 a.m. to 6 p.m., Wednesday - 10 a.m. to 6 p.m., Thursday - 10 a.m. to 6 p.m., Friday - 10 a.m. to 6 p.m., Saturday - 10 a.m. to 6 p.m.

Member Audit Bureau of Circulations. Display advertising closing hours: Monday - 10 a.m. to 6 p.m., Tuesday - 10 a.m. to 6 p.m., Wednesday - 10 a.m. to 6 p.m., Thursday - 10 a.m. to 6 p.m., Friday - 10 a.m. to 6 p.m., Saturday - 10 a.m. to 6 p.m.

Member Audit Bureau of Circulations. Display advertising closing hours: Monday - 10 a.m. to 6 p.m., Tuesday - 10 a.m. to 6 p.m., Wednesday - 10 a.m. to 6 p.m., Thursday - 10 a.m. to 6 p.m., Friday - 10 a.m. to 6 p.m., Saturday - 10 a.m. to 6 p.m.

Member Audit Bureau of Circulations. Display advertising closing hours: Monday - 10 a.m. to 6 p.m., Tuesday - 10 a.m. to 6 p.m., Wednesday - 10 a.m. to 6 p.m., Thursday - 10 a.m. to 6 p.m., Friday - 10 a.m. to 6 p.m., Saturday - 10 a.m. to 6 p.m.

Member Audit Bureau of Circulations. Display advertising closing hours: Monday - 10 a.m. to 6 p.m., Tuesday - 10 a.m. to 6 p.m., Wednesday - 10 a.m. to 6 p.m., Thursday - 10 a.m. to 6 p.m., Friday - 10 a.m. to 6 p.m., Saturday - 10 a.m. to 6 p.m.

Member Audit Bureau of Circulations. Display advertising closing hours: Monday - 10 a.m. to 6 p.m., Tuesday - 10 a.m. to 6 p.m., Wednesday - 10 a.m. to 6 p.m., Thursday - 10 a.m. to 6 p.m., Friday - 10 a.m. to 6 p.m., Saturday - 10 a.m. to 6 p.m.

Member Audit Bureau of Circulations. Display advertising closing hours: Monday - 10 a.m. to 6 p.m., Tuesday - 10 a.m. to 6 p.m., Wednesday - 10 a.m. to 6 p.m., Thursday - 10 a.m. to 6 p.m., Friday - 10 a.m. to 6 p.m., Saturday - 10 a.m. to 6 p.m.

Member Audit Bureau of Circulations. Display advertising closing hours: Monday - 10 a.m. to 6 p.m., Tuesday - 10 a.m. to 6 p.m., Wednesday - 10 a.m. to 6 p.m., Thursday - 10 a.m. to 6 p.m., Friday - 10 a.m. to 6 p.m., Saturday - 10 a.m. to 6 p.m.

Member Audit Bureau of Circulations. Display advertising closing hours: Monday - 10 a.m. to 6 p.m., Tuesday - 10 a.m. to 6 p.m., Wednesday - 10 a.m. to 6 p.m., Thursday - 10 a.m. to 6 p.m., Friday - 10 a.m. to 6 p.m., Saturday - 10 a.m. to 6 p.m.

Member Audit Bureau of Circulations. Display advertising closing hours: Monday - 10 a.m. to 6 p.m., Tuesday - 10 a.m. to 6 p.m., Wednesday - 10 a.m. to 6 p.m., Thursday - 10 a.m. to 6 p.m., Friday - 10 a.m. to 6 p.m., Saturday - 10 a.m. to 6 p.m.

Member Audit Bureau of Circulations. Display advertising closing hours: Monday - 10 a.m. to 6 p.m., Tuesday - 10 a.m. to 6 p.m., Wednesday - 10 a.m. to 6 p.m., Thursday - 10 a.m. to 6 p.m., Friday - 10 a.m. to 6 p.m., Saturday - 10 a.m. to 6 p.m.

Member Audit Bureau of Circulations. Display advertising closing hours: Monday - 10 a.m. to 6 p.m., Tuesday - 10 a.m. to 6 p.m., Wednesday - 10 a.m. to 6 p.m., Thursday - 10 a.m. to 6 p.m., Friday - 10 a.m. to 6 p.m., Saturday - 10 a.m. to 6 p.m.

Member Audit Bureau of Circulations. Display advertising closing hours: Monday - 10 a.m. to 6 p.m., Tuesday - 10 a.m. to 6 p.m., Wednesday - 10 a.m. to 6 p.m., Thursday - 10 a.m. to 6 p.m., Friday - 10 a.m. to 6 p.m., Saturday - 10 a.m. to 6 p.m.

Member Audit Bureau of Circulations. Display advertising closing hours: Monday - 10 a.m. to 6 p.m., Tuesday - 10 a.m. to 6 p.m., Wednesday - 10 a.m. to 6 p.m., Thursday - 10 a.m. to 6 p.m., Friday - 10 a.m. to 6 p.m., Saturday - 10 a.m. to 6 p.m.

Connecticut Yankee

By A.H.O. Way way back before this campaign had revealed how low it could go, we took ourselves out on the prognosticating limb by guessing the two key figures in next Tuesday's results.

We predicted, first, that Senator Tom Dodd would, in his independent candidacy, receive from 110,000 to 120,000 votes, which is considerably less than most polls and most prognosticators predict for him.

Next, we predicted that the total Dodd vote with an estimate that not more than 20,000 of this vote would come from Republicans right wing sources, which would mean that election of Lowell Weicker as the next United States Senator was indicated.

This early prediction of ours has been buffeted about by a number of possible developments. In the past it has always been possible, that the Democratic nominee, Joe Duffey, who certainly has general support, might have a greater head of positive steam than any other candidate in the whole state campaign, in which case he would have a better chance to poll a spectacular political upset and, even though in a three way race, get more votes than even the Democratic candidate for Governor receives.

And, what has changed now? The poisoned bitterness drawing together behind the Dodd candidacy may add up to a higher total than has hitherto been possible for them in Connecticut politics.

Finally, our prediction was based on the expectation that the people of the state would come out to vote in fairly normal strength, something below the usual average for a state election, we thought, but not very far below it. As the campaign has progressed, however, and the presence of ghosts and goblins has grown more and more menacing, we have had a frequent nightmare in which all the decent citizens of Connecticut stayed home, leaving the voting machines, and the outcome to the forces of darkness.

Nightmares notwithstanding, we have to go with the Connecticut electorate as we have known it over the past 40 years, and continue predicting its sanity until our naive costs us. With obvious warning, we let our original appraisal of the Senatorial race stand, Weicker first and Dodd third.

On the moon this problem has been buffeted about by a number of possible developments. In the past it has always been possible, that the Democratic nominee, Joe Duffey, who certainly has general support, might have a greater head of positive steam than any other candidate in the whole state campaign, in which case he would have a better chance to poll a spectacular political upset and, even though in a three way race, get more votes than even the Democratic candidate for Governor receives.

And, what has changed now? The poisoned bitterness drawing together behind the Dodd candidacy may add up to a higher total than has hitherto been possible for them in Connecticut politics.

Finally, our prediction was based on the expectation that the people of the state would come out to vote in fairly normal strength, something below the usual average for a state election, we thought, but not very far below it. As the campaign has progressed, however, and the presence of ghosts and goblins has grown more and more menacing, we have had a frequent nightmare in which all the decent citizens of Connecticut stayed home, leaving the voting machines, and the outcome to the forces of darkness.

Nightmares notwithstanding, we have to go with the Connecticut electorate as we have known it over the past 40 years, and continue predicting its sanity until our naive costs us. With obvious warning, we let our original appraisal of the Senatorial race stand, Weicker first and Dodd third.

On the moon this problem has been buffeted about by a number of possible developments. In the past it has always been possible, that the Democratic nominee, Joe Duffey, who certainly has general support, might have a greater head of positive steam than any other candidate in the whole state campaign, in which case he would have a better chance to poll a spectacular political upset and, even though in a three way race, get more votes than even the Democratic candidate for Governor receives.

And, what has changed now? The poisoned bitterness drawing together behind the Dodd candidacy may add up to a higher total than has hitherto been possible for them in Connecticut politics.

Finally, our prediction was based on the expectation that the people of the state would come out to vote in fairly normal strength, something below the usual average for a state election, we thought, but not very far below it. As the campaign has progressed, however, and the presence of ghosts and goblins has grown more and more menacing, we have had a frequent nightmare in which all the decent citizens of Connecticut stayed home, leaving the voting machines, and the outcome to the forces of darkness.

Nightmares notwithstanding, we have to go with the Connecticut electorate as we have known it over the past 40 years, and continue predicting its sanity until our naive costs us. With obvious warning, we let our original appraisal of the Senatorial race stand, Weicker first and Dodd third.

On the moon this problem has been buffeted about by a number of possible developments. In the past it has always been possible, that the Democratic nominee, Joe Duffey, who certainly has general support, might have a greater head of positive steam than any other candidate in the whole state campaign, in which case he would have a better chance to poll a spectacular political upset and, even though in a three way race, get more votes than even the Democratic candidate for Governor receives.

And, what has changed now? The poisoned bitterness drawing together behind the Dodd candidacy may add up to a higher total than has hitherto been possible for them in Connecticut politics.

Finally, our prediction was based on the expectation that the people of the state would come out to vote in fairly normal strength, something below the usual average for a state election, we thought, but not very far below it. As the campaign has progressed, however, and the presence of ghosts and goblins has grown more and more menacing, we have had a frequent nightmare in which all the decent citizens of Connecticut stayed home, leaving the voting machines, and the outcome to the forces of darkness.

Open Forum

"Instant Gratification" To the Editor, A word on the 18-year-old vote amendment.

"Indecent Time" I sincerely appreciate your endorsement of my candidacy for re-election to the General Assembly.

"I Endorse Dom" To the Editor, During the years that I have known Dom Squatrito I have always been impressed with his enthusiasm as well as his understanding of people and their problems.

"A Thought for Today" Sponsored by the Manchester Council of Churches. This is the time of year when many Protestants celebrate the Reformation event.

"10 Years Ago" Purnell Corp. buys and tears down bowling alleys and Your Yarn Shop on Oak St. and Cottage St. to provide 60 more parking spaces in the downtown area.

"Quotations" "Security, warmth and love have to be found and when the men in a girl's life have failed to provide these, then active attempts to find them may be required." - Dr. A.D. Gunn, a London physician specializing in the problems of youth.

"Fischetti" 1970 Chicago Daily News. I'M PROUD TO SAY THAT MY ESTABLISHMENT HAS THE GOOD WHITE HOUSEKEEPING'S SEAL OF APPROVAL.

"Herald Yesterdays" 25 Years Ago. High school band begins drive for \$2,000 to completely outfit 50 members with new uniforms; a sum of money from a bank account belonging to an inactive alumni association of South Manchester High School is turned into the band uniform account.

"A Thought for Today" Sponsored by the Manchester Council of Churches. This is the time of year when many Protestants celebrate the Reformation event.

"10 Years Ago" Purnell Corp. buys and tears down bowling alleys and Your Yarn Shop on Oak St. and Cottage St. to provide 60 more parking spaces in the downtown area.

"Quotations" "Security, warmth and love have to be found and when the men in a girl's life have failed to provide these, then active attempts to find them may be required." - Dr. A.D. Gunn, a London physician specializing in the problems of youth.

"Fischetti" 1970 Chicago Daily News. I'M PROUD TO SAY THAT MY ESTABLISHMENT HAS THE GOOD WHITE HOUSEKEEPING'S SEAL OF APPROVAL.

"Herald Yesterdays" 25 Years Ago. High school band begins drive for \$2,000 to completely outfit 50 members with new uniforms; a sum of money from a bank account belonging to an inactive alumni association of South Manchester High School is turned into the band uniform account.

"A Thought for Today" Sponsored by the Manchester Council of Churches. This is the time of year when many Protestants celebrate the Reformation event.

"10 Years Ago" Purnell Corp. buys and tears down bowling alleys and Your Yarn Shop on Oak St. and Cottage St. to provide 60 more parking spaces in the downtown area.

"Quotations" "Security, warmth and love have to be found and when the men in a girl's life have failed to provide these, then active attempts to find them may be required." - Dr. A.D. Gunn, a London physician specializing in the problems of youth.

"Fischetti" 1970 Chicago Daily News. I'M PROUD TO SAY THAT MY ESTABLISHMENT HAS THE GOOD WHITE HOUSEKEEPING'S SEAL OF APPROVAL.

"Herald Yesterdays" 25 Years Ago. High school band begins drive for \$2,000 to completely outfit 50 members with new uniforms; a sum of money from a bank account belonging to an inactive alumni association of South Manchester High School is turned into the band uniform account.

Vote on the Questions

For Constitutional Amendment Concerning the Office of Attorney General (Make election of Attorney General a constitutional requirement)

For Constitutional Amendment Concerning Qualifications for State Officers (21 year minimum age requirement)

For Constitutional Amendment Concerning the Qualifications for State Officers (Lower voting age to 18 years)

For Constitutional Amendment Concerning the Office of Attorney General (Make election of Attorney General a constitutional requirement)

For Constitutional Amendment Concerning Qualifications for State Officers (21 year minimum age requirement)

For Constitutional Amendment Concerning the Qualifications for State Officers (Lower voting age to 18 years)

For an Appropriation of \$1,900,000 for the Construction and Renovation of Nathan Hale School, Robert School and Tenney School

For an Appropriation of \$1,605,000 for the Construction and Renovation of Highways

For an Appropriation of \$970,000 for the Construction and Renovation of Sidewalks

For an Appropriation of \$425,000 for the Acquisition and Use of Off Street Parking

For an Appropriation of \$1,900,000 for the Construction and Renovation of Highways

For an Appropriation of \$970,000 for the Construction and Renovation of Sidewalks

For an Appropriation of \$425,000 for the Acquisition and Use of Off Street Parking

For an Appropriation of \$1,900,000 for the Construction and Renovation of Highways

For an Appropriation of \$970,000 for the Construction and Renovation of Sidewalks

For an Appropriation of \$425,000 for the Acquisition and Use of Off Street Parking

For an Appropriation of \$1,900,000 for the Construction and Renovation of Highways

For an Appropriation of \$970,000 for the Construction and Renovation of Sidewalks

Party Offices to Operate Pull to Right

OFFICES TO OPERATE PULL TO RIGHT

DEMOCRATIC

REPUBLICAN

DOOD INDEPENDENT

A PUBLIC PARTY

18th Assembly District

19th Assembly District

20th Assembly District

18th Assembly District

19th Assembly District

20th Assembly District

18th Assembly District

19th Assembly District

20th Assembly District

18th Assembly District

19th Assembly District

20th Assembly District

18th Assembly District

Wonders of the Universe

Astronomers Eyeing Moon

By Dr. I. M. LEVIT, DIRECTOR. The Palis Placidarium of the Franklin Institute.

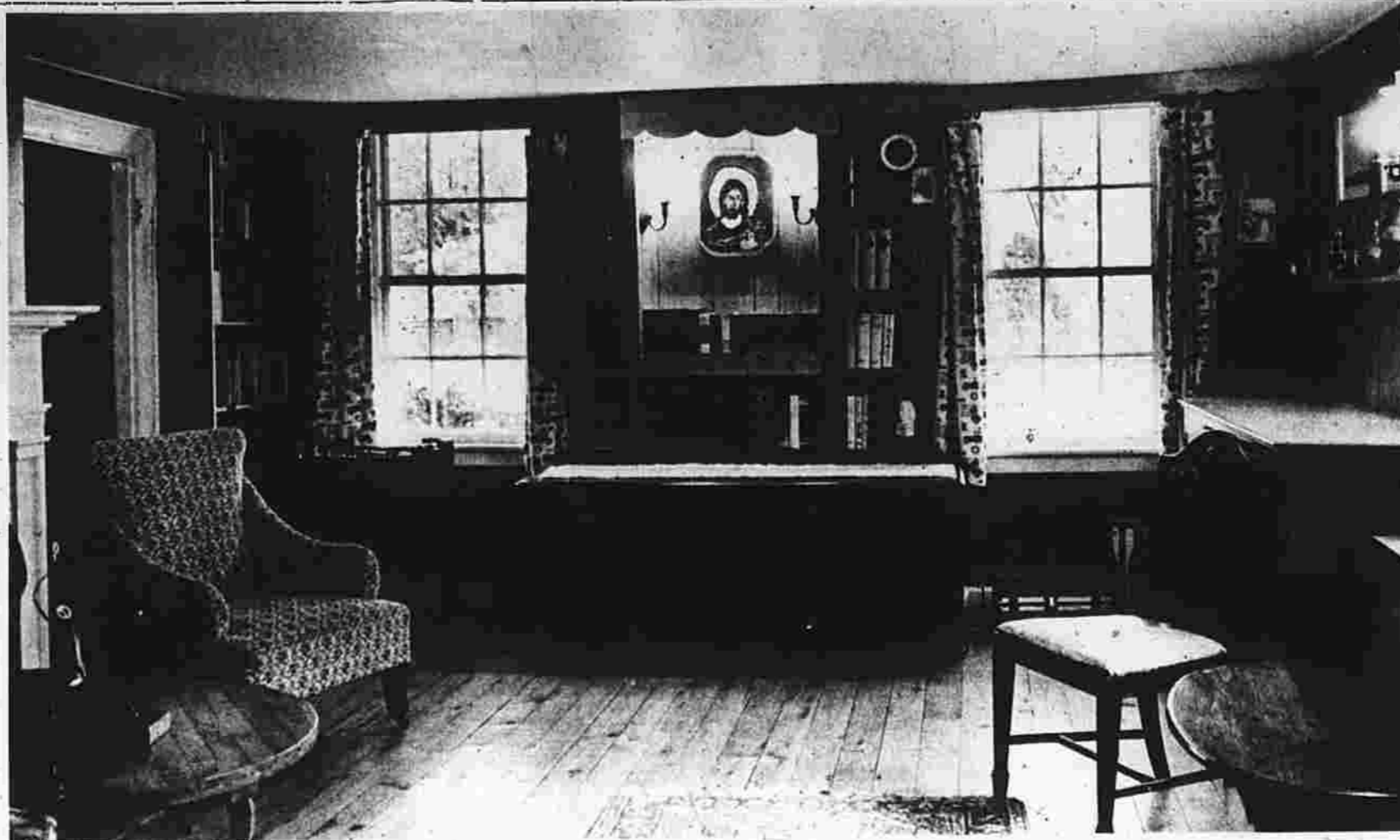
With two manned lunar landings between us and further moon exploration in the offing, scientists are refining the techniques for executing scientific experiments from the lunar surface.

Even plans for future orbiting observatories do not include the use of television cameras, or to transmitting data from the moon to earth.

The most obvious advantage to the moon is the lack of an atmosphere. The handicaps of a terrestrial atmosphere to astronomers are many.



Dr. and Mrs. Peter B. Gram's house overlooking Bolton Lake.

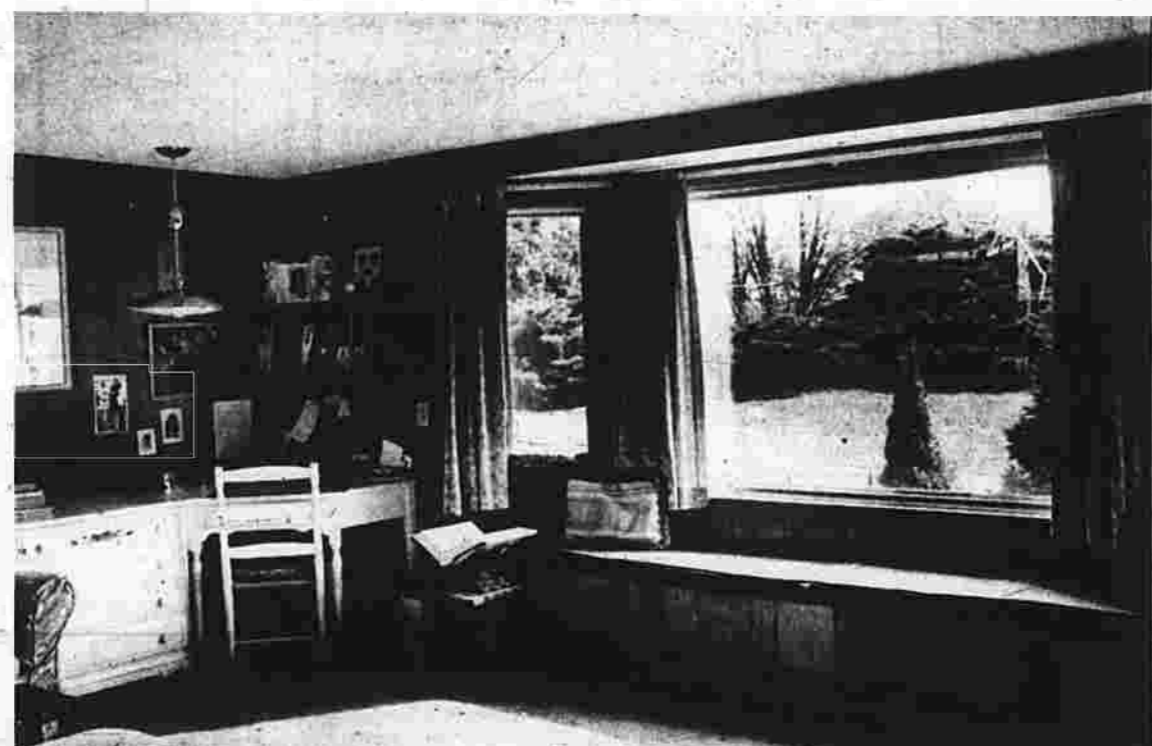


An icon, Dr. Gram's interpretation of the Omnipotent, painted on wood, is the focal point of the family room.

# Heralding Homes House That Reflects Tastes of the Grams



Maidens in motion engraved by Dr. Gram in a wood panel which hangs above fireplace in paved dining room furnished in Spanish colonial.



The master bedroom bay window overlooks Bolton Lake beyond the terrace.



All of Mrs. Gram's sewing needs are in this built-in unit.



Paneling, painted beams, mobiles and a Greek peasant rug camouflage the living room in a house dating back to 1689.

Story by June B. Tomkins Photos by Albert Bucivicius

A house is a house, is a house, is a house, especially if it's of the early American, pre-Revolutionary variety. But color it up with lamps and furniture and novelties with a foreign flavor and the house becomes a home of very individual and personal taste and not a conventional repository of antiques.

Such is the home of Dr. and Mrs. Peter Gram on Vernon Rd. in Bolton which overlooks the lake. Mrs. Gram tells how she met an interior decorator on a trip abroad and described her house to him. He reacted with amazement at a stock and couldn't imagine what her house must look like. As Mrs. Gram says, "it's a hodge-podge of things, but this is part of our personality."

Hodge-podge or not, and it really isn't, it is a home which reflects the ethnic backgrounds of the Grams as well as the items they have liked and brought back from their travels to Mexico and the Yucatan, and Greece.

The main entrance seems to be into the kitchen. To the left is a colorful, sunny, library-den carpeted in a warm rust-orange with the original paneled walls painted a soft aqua. A built-in window seat fills in one corner with storage units under the seat cushions for everything from skates and mittens to toys and books. "It's a marvelous place to put everything," comments Mrs. Gram.

Book shelves line much of the

living room. The living room is large with polished pine flooring overlay. Although it is at the front of the house, the door is seldom used. Dr. Gram painted the walls of this room in pine as he did the other rooms in the house. His profession as an orthopedic surgeon proved to be of greater advantage than he realized when he started out, for nothing in the house was plain. If not as a carpenter, then as a "bone-setter" was his saving grace, for the fitting and matching in the living room.

A lovely antique lovenest happened as an accident. A beat-up looking settee was in an old garage waiting to be disposed of. Mrs. Gram decided to salvage it and fix it up. With refinishing and reupholstering, she has become an unusual piece of mahogany. Three vertical back panels and shaped seats make it graceful and comfortable.

Two low tables from Mexico are among the attractive furnishings of the room. Circular, green and pink inlay table tops rest on metal legs. One of the legs was too fragile to pack and back from Mexico hangs at one end of the sofa. Its amber glass gives a soft glow.

Two paintings, at either end of the sofa, contrast in mood and style. One is a sensitive painting on birch of two young girls; the other is a painting of a kneeling figure done in sharp angular outlines suggesting stained glass art. On the wide fireplace mantel appears a Mexican monk's chair. A conversation piece whether or not one sits in it or not. The high, narrow back has painted carvings of Christ in the center surrounded by the twelve apostles. For sitting, it is not comfortable as the carved figures jut into your back, particularly the one of Christ as it is the most prominent. "Probably to job your conscience!" suggests Mrs. Gram.

In this room, also, as elsewhere throughout the house, are examples of Dr. Gram's various expressions in art. A mobile of driftwood resembling fish undulates on air currents in front of the window. A cut-up in copper, resembling a pet, is on the fireplace. The Greek peasant rug with cover strips of rose and black with colored and paneled covers the center portion of the floor. At the entrance of the black with colored and paneled covers the center portion of the floor. At the entrance of the black with colored and paneled covers the center portion of the floor.

# Churches

**Emmanuel Lutheran Church**  
Church and Chestnut Sts.  
Rev. C. Henry Anderson, Pastor  
Bruce J. Erickson, Intern  
9 and 10:45 a.m., Divine Worship with Holy Communion. Sermon by Pastor Anderson. "A Day of Commemoration."  
9:30 and 10:40 a.m., Church School for three-year-olds through Grade 8. Nursery for infants.

**Church of Christ**  
Loyal and Vernon Sts.  
Eugene Brewer, Minister  
9 a.m., Bible Classes for all ages.  
10 a.m., Worship. Sermon: "Penalties of Procrastination."  
6 p.m., Worship. Sermon: "Overcoming Feelings of Rejection."

**First Church of Christ, Scientist**  
447 N. Main St.  
11 a.m., Church Service, Sunday School, and Nursery. "Eviserating Punishment" is the subject of the lesson - sermon. The Golden Text: "Pre-verbs 14:24."  
The Christian Science Reading Room, open to the public except on holidays, is located at 749 Main St. The hours are 11 a.m. to 4 p.m. Monday through Saturday.

**Calvary Church (Assemblies of God)**  
641 E. Middle Tpke.  
Rev. K. L. Gustafson, Pastor  
10 a.m., Divine Worship and Church School. Nursery facilities are available.  
7 p.m., Family gospel service. Hymnology, gospel music and Bible message.

**Center Congregational Church**  
United Church of Christ  
11 Center St.  
Rev. Clifford O. Simpson, Minister  
Rev. Winthrop Nelson Jr., Minister of Religious Education  
9:15 and 11 a.m., Morning Worship. Holy Communion. Rev. Mr. Simpson preaching. Topic: "Waiting."  
10:15 a.m., Coffee Shop. Woodruff Hall.  
8:30 p.m., Fellowship Meeting. Youth Group and adults. Woodruff Hall. Fun Night, mixer games, sociality and candle-light worship services. 7 p.m., New members class. Federation Room.

**Trinity Congregational Church**  
302 Hackmatack St.  
Rev. Norman E. Swensen, Pastor  
9:30 a.m., Sunday School with classes for all ages through adult, plus an Infant Nursery.  
10:30 a.m., Morning Worship. The Rev. Mr. Swensen will preach on "Goodness That Leads You." Receive into membership 14 new members and serve the Lord's supper. Nursery for pre-school children available.

**Concordia Lutheran Church**  
Kingdom Hall  
409 Pitkin St.  
Rev. Joseph E. Bourret, Pastor  
Rev. Louis E. Bauer Jr., Assistant Pastor  
8 a.m., Stewardship breakfast.  
9 a.m., Stewardship program, Kaiser Hall. The Rev. Robert Manabach, guest speaker. Church School and Nursery. 10:30 a.m., Holy Communion, Church School, and Nursery.

**Zion Evangelical Lutheran Church**  
(Missouri Synod)  
Cooper and High Sts.  
Rev. Charles W. Kuhl, Pastor  
9 a.m., Divine Worship with Holy Communion. Nursery in Parish House.  
10:15 a.m., Sunday School and Youth Forum.  
10:15 to 11:30 a.m., Grade 6 and 8 Youth Instruction.  
Full Gospel Christian Fellowship Interdenominational Orange Hall  
Rev. Philip P. Saunders, Pastor  
10:30 a.m., Adult Bible Study and open discussion. Sunday School.  
7:30 p.m., Evangelistic service.

**First Evangelical Lutheran Church of Rockville**  
Loyal and Vernon Streets  
10:15 a.m., Church School. Communion. Sermon: "Op This is Mine."  
10:30 a.m., The Service.

# Area Churches

**North United Methodist Church**  
230 Parker St.  
Rev. Earle R. Custer, Pastor  
9 and 10:30 a.m., Worship Service. Sermon: "Intending to Lead a New Life." Sacrament of Holy Communion at both services.  
9 a.m., Church School. Nursery and Grades 3 through 8.  
10:30 a.m., Church School. Nursery. Kindergarten and Grades 1 and 2.  
1 p.m., Baptism Seminar.  
8 p.m., Young Adult group meets at church.

**Second Congregational Church**  
United Church of Christ  
385 N. Main St.  
Rev. Felix M. Davis, Minister  
Rev. Ernest S. Harris, Associate Minister  
10 a.m., Morning Worship. Communion. Sermon by the Rev. Mr. Davis.  
Nursery through Church School Grade 8.  
6 p.m., Party for children who collected for UNICEF.

**Community Baptist Church**  
An American Baptist Church  
505 E. Center St.  
Rev. Walter S. Loomis, Minister  
10:15 a.m., Church School for all ages. Sunday School for Nursery through Grade 4 continuing during the worship service.  
10:30 a.m., Worship Service. Communion. Topic: "The Stewardship of Life." A nursery is provided in the Children's Building.  
4:30 p.m., Junior High Youth Fellowship. Fellowship Hall.  
Senior High Youth Fellowship. Youth Building. Face to Face Group will meet in the Choir Room, with John McClain and Mrs. Edward Corcoran, leaders.

**Church of the Nazarene**  
228 Main St.  
Rev. William A. Taylor, Pastor  
9 a.m., Prayer Service.  
9:30 a.m., Church School for everyone.  
10:45 a.m., Morning Worship. Laymen's Sunday David Blessing. Sermon by the Rev. M. L. Chavert, pastor, New Bedford Church of the Nazarene.

**South United Methodist Church**  
409 Pitkin St.  
Rev. J. Manley Shaw, D. D., Pastor  
Rev. Carl W. Saunders, Associate Pastor  
Rev. Gary S. Cornell, Associate Pastor  
9 and 10:45 a.m., Worship for the whole church. Service of Holy Communion. The Rev. Dr. Shaw preaching. Sermon: "If God Paid Bills." Church School. Infant-toddlers through adults. Men's Christian Literary Class, Susannah Wesley Hall.  
10:15 a.m., Youth Lounge. Open to Senior High.  
8 to 9:30 p.m., "Out of the Depths," a study in the Psalms led by the Rev. Mr. Cornell.  
7:30 to 9 p.m., Senior High Halloween Party in Youth Lounge.

**Jehovah's Witnesses**  
Kingdom Hall  
726 N. Main St.  
9:30 a.m., Public Bible discourse "The Missionary Journeys and Letters of the Apostle Paul."  
10:30 a.m., Group discussion of the Oct. 1 Watchtower magazine article "Breaking the Yoke of the Oppressor."  
9:30 a.m., Holy Communion. 9:30 a.m., Sunday Morning Coffee House.  
11 a.m., Holy Communion with the sermon by the Rev. Mr. Nostrand.  
10:15 a.m., Holy Baptism and Home.

**United Pentecostal Church**  
50 Woodbridge St.  
Rev. Robert W. Taber, Pastor  
9 a.m., Sunday School.  
11 a.m., Worship Service.  
7:30 p.m., Evangelistic Service.

**St. Mary's Episcopal Church**  
Church and Park Sts.  
Rev. George F. Nostrand, Rector  
Rev. Russell Allen, Rev. Timothy Carberry, Rev. Ronald Halderman  
7:30 a.m., Holy Communion.  
9 a.m., Holy Communion with the sermon by the Rev. Mr. Nostrand.  
9:30 a.m., Church School, Crib Class and Nursery care.  
7 p.m., Holy Communion with the sermon by the Rev. Mr. Nostrand.  
10:15 a.m., Holy Baptism and Home.

**St. Bernard's Church**  
Rockville  
Rev. George P. Kelly, Pastor  
Rev. William Schneider, Rev. Anthony Mitchell  
Saturday Mass, 7 p.m.  
Sunday Masses, 7, 8, 9, 10:30 and 11:45 a.m.

**St. Matthew's Church**  
Tolland  
Rev. J. Clifford Curtin, Pastor  
Saturday Mass, 7 p.m.  
Sunday Masses, 7, 8:30, and 10:30 a.m.

**Ustarian Meeting House**  
30 Bloomfield Ave., Hartford  
Rev. Nathaniel D. Lauriat  
10:30 a.m., Worship Service, Nursery and Worship Church of Christ.

**Vernon United Methodist Church**  
Rt. 30  
Rev. Joe K. Carpenter, Minister  
9:30 a.m., Church Service. Nursery and Kindergarten classes.  
10:45 a.m., Church School classes. Grades 1 thru 6.  
7:30 p.m., Junior and Senior Youth Fellowship.

# Heralding Homes House That Reflects Taste of the Grams

(Continued from Page 6)

walls in this room which make it a favorite place to read or study. In front of sunny windows is a collection of house plants including one enormous bush which Mrs. Gram describes as a "responsible gardenia plant on Mother's Day about five years ago," but it responds so well to living in the ground in the summer and wintering inside that it has grown into a "monster plant."

By the fireplace is an unusual low-cut Windsor chair enameled to black - very cozy when one wants to stretch out in front of the fire.

The living room is large with polished pine flooring overlay. Although it is at the front of the house, the door is seldom used. Dr. Gram painted the walls of this room in pine as he did the other rooms in the house. His profession as an orthopedic surgeon proved to be of greater advantage than he realized when he started out, for nothing in the house was plain. If not as a carpenter, then as a "bone-setter" was his saving grace, for the fitting and matching in the living room.

A lovely antique lovenest happened as an accident. A beat-up looking settee was in an old garage waiting to be disposed of. Mrs. Gram decided to salvage it and fix it up. With refinishing and reupholstering, she has become an unusual piece of mahogany. Three vertical back panels and shaped seats make it graceful and comfortable.

Two low tables from Mexico are among the attractive furnishings of the room. Circular, green and pink inlay table tops rest on metal legs. One of the legs was too fragile to pack and back from Mexico hangs at one end of the sofa. Its amber glass gives a soft glow.

Two paintings, at either end of the sofa, contrast in mood and style. One is a sensitive painting on birch of two young girls; the other is a painting of a kneeling figure done in sharp angular outlines suggesting stained glass art. On the wide fireplace mantel appears a Mexican monk's chair. A conversation piece whether or not one sits in it or not. The high, narrow back has painted carvings of Christ in the center surrounded by the twelve apostles. For sitting, it is not comfortable as the carved figures jut into your back, particularly the one of Christ as it is the most prominent. "Probably to job your conscience!" suggests Mrs. Gram.

In this room, also, as elsewhere throughout the house, are examples of Dr. Gram's various expressions in art. A mobile of driftwood resembling fish undulates on air currents in front of the window. A cut-up in copper, resembling a pet, is on the fireplace. The Greek peasant rug with cover strips of rose and black with colored and paneled covers the center portion of the floor. At the entrance of the black with colored and paneled covers the center portion of the floor.

Commenting on the combination of various materials used in furnishings and decor, Mrs. Gram says "the likes a variety of materials used in the floor overlay, and original wall paneling remains behind, some colonial furnishings are still paying tribute to the past. The long dining room give one the impression at first, of a great-lik-it is and they like it that way. In a castle, despite the fact that the Gram family includes six room's unusually low ceiling, children, Coralie, 20, is away one end of the dining room is at school in Strasbourg, France; finished in shaves with storage cupboards beneath.

Lamp from Guadalajara, Mexico, and Cobby, 14, are sophisticated window drapes with emere and freshman at Bolton Blue Mexican embroidery High School; Billy 11, and match a blue woyen tablecloth. Greg, 10, are in the Sixth and with white embroidery. Soft Fourth grades.

8 a.m., Holy Communion.  
10 a.m., Family Service.  
8 and 10 a.m., Family Service. Baby-sitting provided.

**St. Mary's Church**  
Rt. 31, Coventry  
Rev. Bernard Miller, Pastor  
Rev. Richard F. Roughan, Assistant Pastor  
Saturday Mass, 7:30 p.m.  
Sunday Masses, 7:30, 9:30 and 10:45 a.m.

# Area Churches

**First Congregational Church**  
Hebron  
Rev. Herbert O. Kelsey Jr., Pastor  
9:30 a.m., Worship Service. The Rev. J. M. Lacey, assistant pastor, preaching about "How Best Are You Communion. Nursery provided.  
10:45 a.m., Sunday School classes.

**Gilead Congregational Church**  
Hebron  
Rev. Herbert O. Kelsey Jr., Pastor  
9:45 a.m., Sunday School classes.  
11 a.m., Worship Service. The Rev. Mr. Kelsey preaching. His topic: "How Best Are You?" Communion. Nursery provided.

**First Congregational Church**  
Of Vernon  
Rev. John A. Lacey, Minister  
Rev. Randall P. Ferrara, Assistant Minister  
Rev. Betty F. Root, Minister of Christian Education  
9:25 and 10:55 a.m., Church School.  
9:30 and 11 a.m., Worship Service. The Rev. Mr. Lacey will preach. His topic: "Mind Your Own Business." Nursery care available.  
3:30 p.m., Tolland Association meeting.  
8 p.m., Junior High Pilgrim Fellowship.  
7 p.m., Senior High Pilgrim Fellowship.

**First Congregational Church**  
Main St., Coventry  
Rev. James W. McBride, Pastor  
9:45 a.m., Church School.  
11 a.m., Nursery. Worship Service and Church School.  
5 p.m., Junior Pilgrim Fellowship.  
7 p.m., Senior Pilgrim Fellowship.

**Second Congregational Church**  
United Church of Christ  
Rt. 44A, Coventry  
Rev. J. M. Lacey, Minister  
9 a.m., Communion Service. Church School.  
7 p.m., Senior Pilgrim Fellowship.

**Talcastville Congregational Church**  
Enfield Church of Christ  
Rev. Truman O. Ireland, Pastor  
9:45 a.m., Church School. Nursery through Adult Discussion Group.  
11 a.m., Public Worship. Sacrament of Holy Communion. Supervised child care.  
7:15 p.m., Pilgrim Fellowship.

**United Methodist Church**  
Rt. 44A, Bolton  
Rev. David M. Campbell, Minister  
10 a.m., Morning Worship, Sacrament of Communion. Meditation: "The Fellowship of Communion." Church School.  
2 to 4 p.m., Reception for the Rev. Mr. Campbell and the Rev. Mr. Chlinger and their families.  
8 to 9:30 p.m., Ecumenical Youth Group. Football and pizza at Bolton High School Field and at the United Methodist Church.

**Vernon United Methodist Church**  
Rt. 30  
Rev. Joe K. Carpenter, Minister  
9:30 a.m., Church Service. Nursery and Kindergarten classes.  
10:45 a.m., Church School classes. Grades 1 thru 6.  
7:30 p.m., Junior and Senior Youth Fellowship.

# Area Churches

**Avery St. Christian Reformed Church**  
661 Avery St.  
South Windsor  
Rev. James A. Bonenna, Minister  
9:45 a.m., Sunday School for all ages.  
11 a.m., Worship Service.  
7 p.m., Evening Service.

**Our Savior Lutheran Church**  
239 Graham Road  
South Windsor  
Rev. Ronald A. Erbe, Pastor  
8:30 and 10:45 a.m., Worship Service. Holy Communion at the 10:45 service on the first Sunday of each month and at the 8:30 service on the third Sunday of each month.  
9:45 a.m., Sunday School and Adult Bible Class.

**Prince of Peace Lutheran Church**  
Rt. 31 and North River Rd.  
Rev. W. H. Wilkens, Pastor  
10:15 a.m., Worship Service.  
9 a.m., Sunday School.

**Wesleyan United Methodist Church**  
Crystal Lake Rd., Ellington  
Rev. Harvey W. Taber, Pastor  
9:45 a.m., Sunday School for all ages.  
11 a.m., Worship Service. Nursery.  
7 p.m., Wesleyan Youth. 7 p.m., Evening Prayer.

**St. Maurice Church**  
Bolton  
Rev. Robert W. Cronin, Pastor  
Saturday Mass, 5 p.m.  
Sunday Masses, 7:30, 9:15 and 11 a.m.

**Rockville United Methodist Church**  
142 Grove St.  
Rev. Willard E. Conklin, Minister  
9:30 a.m., Church School. Nursery through adults.  
10:30 a.m., Communion Service. Nursery through Grade 4.

**Trinity Evangelical Lutheran Church**  
(Missouri Synod)  
85 Prospect St., Rockville  
Rev. Bruce Rudolf  
8 and 10:30 a.m., Worship Service, Holy Communion.  
9:15 a.m., Sunday School. Adult Instruction Class.

**Unitarian Fellowship of Glastonbury**  
Academy Junior High  
Main St., Glastonbury  
10:30 a.m., Service, Nursery and School.

**Westash Evangelical Lutheran Church**  
(Wisconsin Synod)  
298 Buckland Rd., Wapping  
Rev. Karl E. Gurpe, Pastor  
10 a.m., Worship Service.  
11 a.m., Worship Service.

**St. John's Episcopal Church**  
Rt. 30, Vernon  
Rev. Robert H. Welner, Rector  
8 a.m., Holy Communion.  
10 a.m., Family Service.

**St. Peter's Episcopal Church**  
Sand Hill Rd., South Windsor  
Rev. James A. Birdsall, Vicar  
8 and 10 a.m., Family Service.  
11 a.m., Worship Service.  
7 p.m., Evangelistic service.

**Second Congregational Church**  
United Church of Christ  
Rt. 44A, Coventry  
Rev. Richard F. Roughan, Minister  
Saturday Mass, 7:30 p.m.  
Sunday Masses, 7:30, 9:30 and 10:45 a.m.

# THE BIBLE SPEAKS

By Eugene Brewer

Recently a syndicated columnist wrote on a subject he satirically called "Conspiracy." He says Ralph Nader is one of the foremost exponents of this movement. This brought to mind the automobile safety studies resulting in mountains of publicity, irretrievable political pressure, charges of harassment against America's large corporations, and a generous out-of-court settlement, strict laws governing automobile manufacture - and market prices increases to the consumer! Yet behind all this safety hoopla, statistics show an almost negligible percentage of traffic deaths and injuries are chargeable to construction.

Inebriation accounts for at least half of the highway carnage, and excessive speed stands second. Yet no major drive to eliminate these has been mounted. Seat belts, padded dashboards, and collapsible steering wheels absorb our attention.

We consistently reject realistic alcohol blood level limits, practicable intoxication tests, and penalties that really deter. While we "strain our ears and swallow a camel," the traffic bloodletting continues unabated.

**CHURCH OF CHRIST**  
Loyal and Vernon Streets  
Phone: 645-5517

# OPEN ALL DAY SUNDAY 9 A.M. to 9 P.M. ARTHUR DRUG

**THIS WEEK AT CALVARY CHURCH**  
641 E. MIDDLE TPK. - PHONE 648-8405  
Sunday 10 a.m. Worship & Church School  
7 p.m. Family Worship & Hymnology  
9:30-10:15 p.m. REVIVALITE & ECHOES on WJTB - Dial 123  
Wed. 7:30 p.m. Revivalite Radio Rally  
Fri. 7:30 p.m. Missionary Service with STG SUNDBERG OF PARAGUAY, S.A.  
"EVERYONE IS CORDIALLY WELCOME!"  
Phone: 645-5517

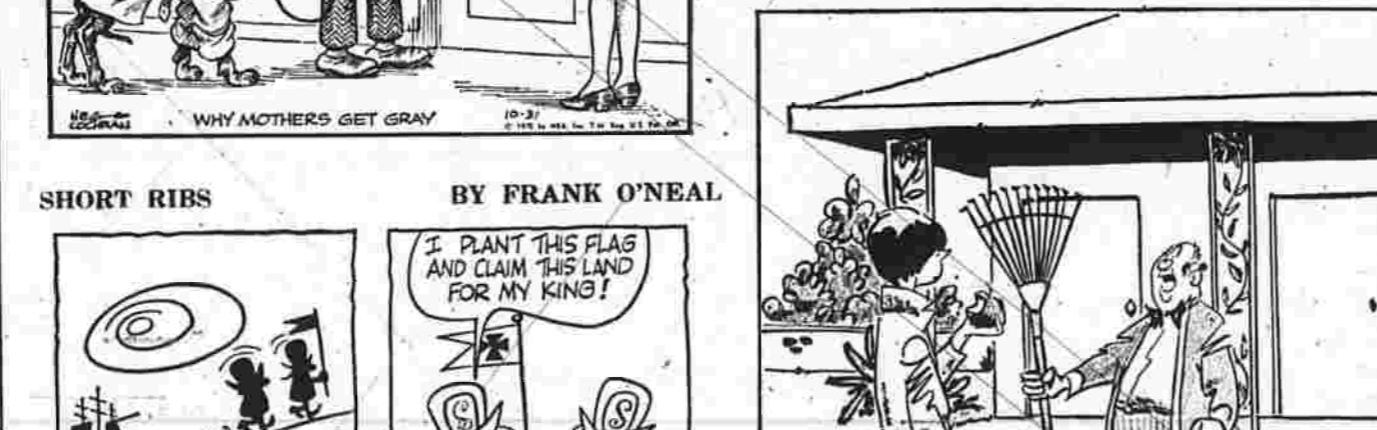
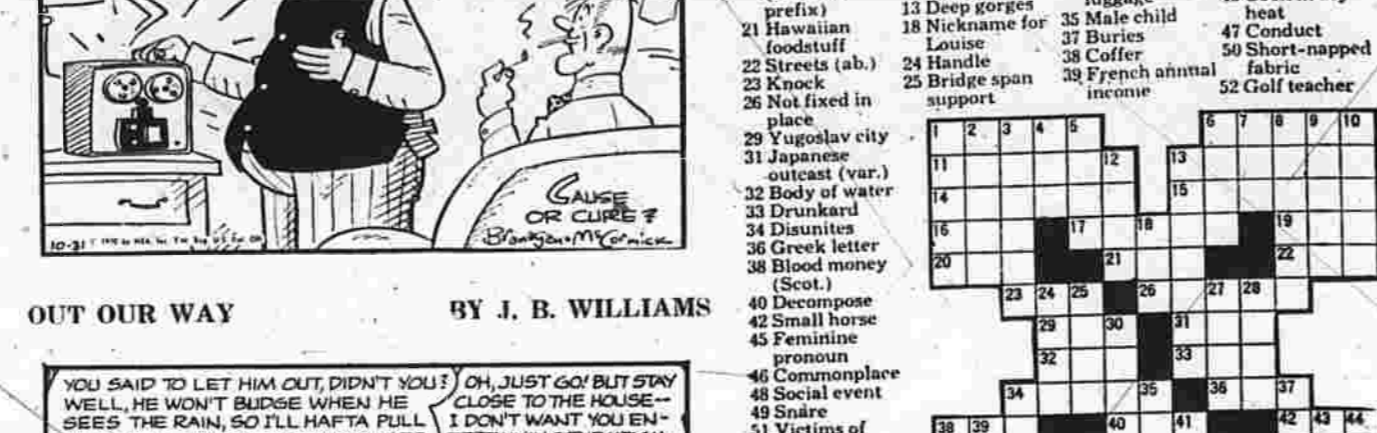
**Tiny Treasures Miniatures Shop**  
"Doll House Miniatures"  
192 Hartford Rd. Manchester  
(Across from Fabric Cupboard)  
Hours: Monday thru Saturday  
10 a.m. to 4 p.m.  
Phone 648-2384

**NEW STORE HOURS**  
**9 a.m. - 6 p.m.**  
NO SUNDAYS OR HOLIDAYS  
**MANCHESTER DRUG**  
717 MAIN STREET









Word puzzle section with 'Across' and 'Down' clues and a grid.

TV Shows

Election Shows Near Fadeout



Walter Cronkite's 20-Hour TV Stint

Walter Cronkite's 20-hour television stint... He will be on the air for 20 hours...

New London County Ballot Barometer

New London County ballot barometer... The results of the election...

THURSDAY JO PROGRAM

Table listing TV programs for Thursday, including 'The Dick Van Dyke Show', 'The Mary Tyler Moore Show', etc.

FRIDAY JO PROGRAM

Table listing TV programs for Friday, including 'The Dick Van Dyke Show', 'The Mary Tyler Moore Show', etc.

Staner Electronics advertisement for stereo equipment and services.

Don Willis Carpet advertisement for carpeting services.

Atlantic Fuel Oil advertisement for fuel services.

Small advertisement for a business or service.

Small advertisement for a business or service.

Small advertisement for a business or service.

Small advertisement for a business or service.

Large vertical text '31130031' on the right edge of the page.



# BUSINESS SERVICES DIRECTORY

**Watkins FUNERAL HOME**  
Wm. J. Lennon, Director  
142 E. CENTER ST.  
649-7196

**TOYS**  
Layaway Now!  
Tents, Cots, Sleeping Bags,  
Air Mattresses, Shovels,  
Ladders

**FARR'S**  
Campus Book Sport  
2 MAIN STREET  
at Depot Square  
Open Daily to 8:00 P.M.  
J. FARR - 645-7111

**Cunliffe Repairs Car Damages**  
No one wants to think of having their car damaged in an accident but unfortunately there are many accidents today, some major repair jobs, some minor. Should you be unfortunate enough to have your car damaged, call Cunliffe Motor Sales located on Rt. 88 in Vernon, just above the traffic circle on the road to Rockville. Their telephone number is 645-0018. In case of a serious accident, they have a wrecker that will safely tow your car to the shop.

**Take Papers to Ostrinsky**  
Are you wondering just what price for salvageable materials, to do with all the old newspapers you have piled up in your basement? Right now is a good time to get rid of them for cash. There is one newspaper dealer in good for old newspapers who will pay you more than any other dealer in the area. He is Ostrinsky, 731 Parker St., where you will be paid cash for them. Do not take it to them. The more you have, the more you will be paid. One-car families have to take their cars to the shop at night and put off all their errands until the next day. If you have a car, you can take it to Ostrinsky's and get cash for it. He will take care of the car for you. He will also take care of the car for you. He will also take care of the car for you.

**MANCHESTER MEMORIAL CO.**  
Opposite East Cemetery  
Quality Memorials  
Over 50 Years' Experience  
Call 649-5807  
A. ALMERTZ, Prop.  
Harrison St., Manchester

**STEVENSSON'S ESSO**  
405 MAIN ST.  
TEL. 649-5533  
• Tune-Ups  
• Engine Cleaning  
• General Repairs  
• 24 Hr. Stamps

**Ostrinsky DEALER IN WASTE MATERIALS IRON SCRAP METAL AND PAPER**  
781 PARKER ST.  
Tel. 645-7375 or 645-5870

**United Rent-Alls**  
588 BURNHIDE AVE.  
EAST HARTFORD  
289-6333  
Power and Hand Tools  
Painting and Decorating  
Tents and Canvas  
Garden and Land Tools  
Baby, Household, Party  
and Banquet Supplies  
Invaluable Needs

**YOUR COMPLETE PET CENTER**  
Canneries - Parakeets  
Tropical Fish - Tropical  
Handmade - Goggles  
Mixed Breed Puppies  
Aquarium Accessories, etc.  
Our Own Specialized Pet Foods

**MANCHESTER PET CENTER**  
908 Main St., Manchester

**STAR GAZER**  
By CLAY R. POLLAN  
Your Daily Astrology Guide  
According to the Stars  
To develop message for Sundays, read words corresponding to number of your Zodiac birth sign.

**MEMORIAL CORNER STORE**  
• Party Goods, Magazines  
• Groceries, Cold Cuts  
• Fruits-Vegetables  
• Greeting Cards  
• Open 7 Days A Week  
• You Can Depend On Us!

**MERCURY Travel Agency**  
646-2756  
NO SERVICE CHARGE  
RESERVATIONS FOR:  
• HOTELS  
• AIRLINES  
• STEAMSHIPS  
87 Main St., Manchester

**COINS Buy - Sell Appraise Collections Wanted**  
We're Paying Top Current Prices, Cash!  
**CONNECTICUT VALLEY COIN CO.**  
97 Center Street, Manchester  
645-8000  
Hours: 11:30 - 8:00  
Monday Closed

**GUNLIFFE MOTOR SALES**  
EXPERT AUTO BODY and FENDER REPAIRS  
ENAMELS and LAQUES REFINISHING  
REASONABLE PRICES  
JUST ABOVE THE TRAFFIC  
Circle  
TEL. 645-0016

**Hamill's Printery**  
Commercial Printing and Rubber Stamps  
• Wedding Invitations and Accessories  
• Business Cards, Letterheads, Envelopes  
• All types of Business Forms-Registers-Receipts-Checkbooks-etc.  
• Custom Made Rubber Stamps  
check our LOW prices  
PHONE 647-1268  
John Dennis Hamill  
15 SERVER STREET  
JOHN THOMAS, Manager

**FRAMING CUSTOM & STOCK SCHERTLE GALLERIES**  
Burr Corners, Manchester  
Next to Caldor

**Pat's Award**  
WASHINGTON (AP) - Mrs. Richard M. Nixon was named for the first annual award of Rehabilitation International and will go to Chicago Nov. 4 to receive it. Announcing this Thursday, the White House said the First Lady was being honored for "outstanding contributions to the cause of volunteer activities." Rehabilitation International is an organization of groups working on behalf of the disabled.

**Got A Painting Problem? We'll Help!**  
Service still means something to us—and service means spending extra time with you to help you select the right paint finish for that job you're planning. See us for paint and service when you plan your next project.

**E.A. Johnson PAINT CO.**  
723 MAIN ST., MANCHESTER—PHONE 649-4501  
WE PAINT THAT'S WORTH THE WORK  
Your Independent **Dutch Boy** dealer.

**EXPERT REPAIRS ON FOREIGN CARS UNITED SPORTS CAR REPAIR, Inc.**  
Rt. 83, Vernon, Conn.  
Phone 646-4485  
ESTIMATES ON ALL MAKES  
CASTROL OILS • FOREIGN CAR PARTS  
VW PACER PERFORMANCE EQUIPMENT  
"Next to Vittner's Garden Center"

**McDonald's HAMBURGERS**  
Try 'em today  
look for the golden arches... McDonald's®  
46 WEST CENTER STREET  
SILVER LAKE EXTENSION

**RENT**  
For Parties, Banquets, Receptions  
RICHARD MARTIN PAINTING CONTRACTOR  
No Job Too Small  
649-9285  
649-4411  
FREDERICKS AVENUE  
MANCHESTER

**RENT**  
QUALITY RENTALS  
GUARANTEED SERVICE  
T. ANGELO & CO.  
188 W. Main St., Manchester  
645-7434

PAGE TWO MANCHESTER EVENING HERALD, MANCHESTER, CONN., SATURDAY, OCTOBER 31, 1970 PAGE THREE

## SATURDAY 70 PROGRAM

**SUNDAY 70 PROGRAM**

6:00 AM - 6:30 AM - **NEWS** (CBS)  
6:30 AM - 7:00 AM - **NEWS** (ABC)  
7:00 AM - 7:30 AM - **NEWS** (NBC)  
7:30 AM - 8:00 AM - **NEWS** (CBS)  
8:00 AM - 8:30 AM - **NEWS** (ABC)  
8:30 AM - 9:00 AM - **NEWS** (NBC)  
9:00 AM - 9:30 AM - **NEWS** (CBS)  
9:30 AM - 10:00 AM - **NEWS** (ABC)  
10:00 AM - 10:30 AM - **NEWS** (NBC)  
10:30 AM - 11:00 AM - **NEWS** (CBS)  
11:00 AM - 11:30 AM - **NEWS** (ABC)  
11:30 AM - 12:00 PM - **NEWS** (NBC)  
12:00 PM - 12:30 PM - **NEWS** (CBS)  
12:30 PM - 1:00 PM - **NEWS** (ABC)  
1:00 PM - 1:30 PM - **NEWS** (NBC)  
1:30 PM - 2:00 PM - **NEWS** (CBS)  
2:00 PM - 2:30 PM - **NEWS** (ABC)  
2:30 PM - 3:00 PM - **NEWS** (NBC)  
3:00 PM - 3:30 PM - **NEWS** (CBS)  
3:30 PM - 4:00 PM - **NEWS** (ABC)  
4:00 PM - 4:30 PM - **NEWS** (NBC)  
4:30 PM - 5:00 PM - **NEWS** (CBS)  
5:00 PM - 5:30 PM - **NEWS** (ABC)  
5:30 PM - 6:00 PM - **NEWS** (NBC)  
6:00 PM - 6:30 PM - **NEWS** (CBS)  
6:30 PM - 7:00 PM - **NEWS** (ABC)  
7:00 PM - 7:30 PM - **NEWS** (NBC)  
7:30 PM - 8:00 PM - **NEWS** (CBS)  
8:00 PM - 8:30 PM - **NEWS** (ABC)  
8:30 PM - 9:00 PM - **NEWS** (NBC)  
9:00 PM - 9:30 PM - **NEWS** (CBS)  
9:30 PM - 10:00 PM - **NEWS** (ABC)  
10:00 PM - 10:30 PM - **NEWS** (NBC)  
10:30 PM - 11:00 PM - **NEWS** (CBS)  
11:00 PM - 11:30 PM - **NEWS** (ABC)  
11:30 PM - 12:00 AM - **NEWS** (NBC)



Edward Amer plays TV news chief on "Mary Tyler Moore" Saturdays at 9:30 p.m.

## Educational TV

**Monday, November 2**

6:00 AM - 6:30 AM - **NEWS** (CBS)  
6:30 AM - 7:00 AM - **NEWS** (ABC)  
7:00 AM - 7:30 AM - **NEWS** (NBC)  
7:30 AM - 8:00 AM - **NEWS** (CBS)  
8:00 AM - 8:30 AM - **NEWS** (ABC)  
8:30 AM - 9:00 AM - **NEWS** (NBC)  
9:00 AM - 9:30 AM - **NEWS** (CBS)  
9:30 AM - 10:00 AM - **NEWS** (ABC)  
10:00 AM - 10:30 AM - **NEWS** (NBC)  
10:30 AM - 11:00 AM - **NEWS** (CBS)  
11:00 AM - 11:30 AM - **NEWS** (ABC)  
11:30 AM - 12:00 PM - **NEWS** (NBC)  
12:00 PM - 12:30 PM - **NEWS** (CBS)  
12:30 PM - 1:00 PM - **NEWS** (ABC)  
1:00 PM - 1:30 PM - **NEWS** (NBC)  
1:30 PM - 2:00 PM - **NEWS** (CBS)  
2:00 PM - 2:30 PM - **NEWS** (ABC)  
2:30 PM - 3:00 PM - **NEWS** (NBC)  
3:00 PM - 3:30 PM - **NEWS** (CBS)  
3:30 PM - 4:00 PM - **NEWS** (ABC)  
4:00 PM - 4:30 PM - **NEWS** (NBC)  
4:30 PM - 5:00 PM - **NEWS** (CBS)  
5:00 PM - 5:30 PM - **NEWS** (ABC)  
5:30 PM - 6:00 PM - **NEWS** (NBC)  
6:00 PM - 6:30 PM - **NEWS** (CBS)  
6:30 PM - 7:00 PM - **NEWS** (ABC)  
7:00 PM - 7:30 PM - **NEWS** (NBC)  
7:30 PM - 8:00 PM - **NEWS** (CBS)  
8:00 PM - 8:30 PM - **NEWS** (ABC)  
8:30 PM - 9:00 PM - **NEWS** (NBC)  
9:00 PM - 9:30 PM - **NEWS** (CBS)  
9:30 PM - 10:00 PM - **NEWS** (ABC)  
10:00 PM - 10:30 PM - **NEWS** (NBC)  
10:30 PM - 11:00 PM - **NEWS** (CBS)  
11:00 PM - 11:30 PM - **NEWS** (ABC)  
11:30 PM - 12:00 AM - **NEWS** (NBC)

## MONDAY 70 PROGRAM

**Tuesday, November 3**

6:00 AM - 6:30 AM - **NEWS** (CBS)  
6:30 AM - 7:00 AM - **NEWS** (ABC)  
7:00 AM - 7:30 AM - **NEWS** (NBC)  
7:30 AM - 8:00 AM - **NEWS** (CBS)  
8:00 AM - 8:30 AM - **NEWS** (ABC)  
8:30 AM - 9:00 AM - **NEWS** (NBC)  
9:00 AM - 9:30 AM - **NEWS** (CBS)  
9:30 AM - 10:00 AM - **NEWS** (ABC)  
10:00 AM - 10:30 AM - **NEWS** (NBC)  
10:30 AM - 11:00 AM - **NEWS** (CBS)  
11:00 AM - 11:30 AM - **NEWS** (ABC)  
11:30 AM - 12:00 PM - **NEWS** (NBC)  
12:00 PM - 12:30 PM - **NEWS** (CBS)  
12:30 PM - 1:00 PM - **NEWS** (ABC)  
1:00 PM - 1:30 PM - **NEWS** (NBC)  
1:30 PM - 2:00 PM - **NEWS** (CBS)  
2:00 PM - 2:30 PM - **NEWS** (ABC)  
2:30 PM - 3:00 PM - **NEWS** (NBC)  
3:00 PM - 3:30 PM - **NEWS** (CBS)  
3:30 PM - 4:00 PM - **NEWS** (ABC)  
4:00 PM - 4:30 PM - **NEWS** (NBC)  
4:30 PM - 5:00 PM - **NEWS** (CBS)  
5:00 PM - 5:30 PM - **NEWS** (ABC)  
5:30 PM - 6:00 PM - **NEWS** (NBC)  
6:00 PM - 6:30 PM - **NEWS** (CBS)  
6:30 PM - 7:00 PM - **NEWS** (ABC)  
7:00 PM - 7:30 PM - **NEWS** (NBC)  
7:30 PM - 8:00 PM - **NEWS** (CBS)  
8:00 PM - 8:30 PM - **NEWS** (ABC)  
8:30 PM - 9:00 PM - **NEWS** (NBC)  
9:00 PM - 9:30 PM - **NEWS** (CBS)  
9:30 PM - 10:00 PM - **NEWS** (ABC)  
10:00 PM - 10:30 PM - **NEWS** (NBC)  
10:30 PM - 11:00 PM - **NEWS** (CBS)  
11:00 PM - 11:30 PM - **NEWS** (ABC)  
11:30 PM - 12:00 AM - **NEWS** (NBC)

## Morning TV

**Monday - Friday**

6:00 AM - 6:30 AM - **NEWS** (CBS)  
6:30 AM - 7:00 AM - **NEWS** (ABC)  
7:00 AM - 7:30 AM - **NEWS** (NBC)  
7:30 AM - 8:00 AM - **NEWS** (CBS)  
8:00 AM - 8:30 AM - **NEWS** (ABC)  
8:30 AM - 9:00 AM - **NEWS** (NBC)  
9:00 AM - 9:30 AM - **NEWS** (CBS)  
9:30 AM - 10:00 AM - **NEWS** (ABC)  
10:00 AM - 10:30 AM - **NEWS** (NBC)  
10:30 AM - 11:00 AM - **NEWS** (CBS)  
11:00 AM - 11:30 AM - **NEWS** (ABC)  
11:30 AM - 12:00 PM - **NEWS** (NBC)

## TUESDAY 70 PROGRAM

**Wednesday, November 4**

6:00 AM - 6:30 AM - **NEWS** (CBS)  
6:30 AM - 7:00 AM - **NEWS** (ABC)  
7:00 AM - 7:30 AM - **NEWS** (NBC)  
7:30 AM - 8:00 AM - **NEWS** (CBS)  
8:00 AM - 8:30 AM - **NEWS** (ABC)  
8:30 AM - 9:00 AM - **NEWS** (NBC)  
9:00 AM - 9:30 AM - **NEWS** (CBS)  
9:30 AM - 10:00 AM - **NEWS** (ABC)  
10:00 AM - 10:30 AM - **NEWS** (NBC)  
10:30 AM - 11:00 AM - **NEWS** (CBS)  
11:00 AM - 11:30 AM - **NEWS** (ABC)  
11:30 AM - 12:00 PM - **NEWS** (NBC)  
12:00 PM - 12:30 PM - **NEWS** (CBS)  
12:30 PM - 1:00 PM - **NEWS** (ABC)  
1:00 PM - 1:30 PM - **NEWS** (NBC)  
1:30 PM - 2:00 PM - **NEWS** (CBS)  
2:00 PM - 2:30 PM - **NEWS** (ABC)  
2:30 PM - 3:00 PM - **NEWS** (NBC)  
3:00 PM - 3:30 PM - **NEWS** (CBS)  
3:30 PM - 4:00 PM - **NEWS** (ABC)  
4:00 PM - 4:30 PM - **NEWS** (NBC)  
4:30 PM - 5:00 PM - **NEWS** (CBS)  
5:00 PM - 5:30 PM - **NEWS** (ABC)  
5:30 PM - 6:00 PM - **NEWS** (NBC)  
6:00 PM - 6:30 PM - **NEWS** (CBS)  
6:30 PM - 7:00 PM - **NEWS** (ABC)  
7:00 PM - 7:30 PM - **NEWS** (NBC)  
7:30 PM - 8:00 PM - **NEWS** (CBS)  
8:00 PM - 8:30 PM - **NEWS** (ABC)  
8:30 PM - 9:00 PM - **NEWS** (NBC)  
9:00 PM - 9:30 PM - **NEWS** (CBS)  
9:30 PM - 10:00 PM - **NEWS** (ABC)  
10:00 PM - 10:30 PM - **NEWS** (NBC)  
10:30 PM - 11:00 PM - **NEWS** (CBS)  
11:00 PM - 11:30 PM - **NEWS** (ABC)  
11:30 PM - 12:00 AM - **NEWS** (NBC)

## WEDNESDAY 70 PROGRAM

**Thursday, November 5**

6:00 AM - 6:30 AM - **NEWS** (CBS)  
6:30 AM - 7:00 AM - **NEWS** (ABC)  
7:00 AM - 7:30 AM - **NEWS** (NBC)  
7:30 AM - 8:00 AM - **NEWS** (CBS)  
8:00 AM - 8:30 AM - **NEWS** (ABC)  
8:30 AM - 9:00 AM - **NEWS** (NBC)  
9:00 AM - 9:30 AM - **NEWS** (CBS)  
9:30 AM - 10:00 AM - **NEWS** (ABC)  
10:00 AM - 10:30 AM - **NEWS** (NBC)  
10:30 AM - 11:00 AM - **NEWS** (CBS)  
11:00 AM - 11:30 AM - **NEWS** (ABC)  
11:30 AM - 12:00 PM - **NEWS** (NBC)  
12:00 PM - 12:30 PM - **NEWS** (CBS)  
12:30 PM - 1:00 PM - **NEWS** (ABC)  
1:00 PM - 1:30 PM - **NEWS** (NBC)  
1:30 PM - 2:00 PM - **NEWS** (CBS)  
2:00 PM - 2:30 PM - **NEWS** (ABC)  
2:30 PM - 3:00 PM - **NEWS** (NBC)  
3:00 PM - 3:30 PM - **NEWS** (CBS)  
3:30 PM - 4:00 PM - **NEWS** (ABC)  
4:00 PM - 4:30 PM - **NEWS** (NBC)  
4:30 PM - 5:00 PM - **NEWS** (CBS)  
5:00 PM - 5:30 PM - **NEWS** (ABC)  
5:30 PM - 6:00 PM - **NEWS** (NBC)  
6:00 PM - 6:30 PM - **NEWS** (CBS)  
6:30 PM - 7:00 PM - **NEWS** (ABC)  
7:00 PM - 7:30 PM - **NEWS** (NBC)  
7:30 PM - 8:00 PM - **NEWS** (CBS)  
8:00 PM - 8:30 PM - **NEWS** (ABC)  
8:30 PM - 9:00 PM - **NEWS** (NBC)  
9:00 PM - 9:30 PM - **NEWS** (CBS)  
9:30 PM - 10:00 PM - **NEWS** (ABC)  
10:00 PM - 10:30 PM - **NEWS** (NBC)  
10:30 PM - 11:00 PM - **NEWS** (CBS)  
11:00 PM - 11:30 PM - **NEWS** (ABC)  
11:30 PM - 12:00 AM - **NEWS** (NBC)

**MANCHESTER MOBILE STYLES**  
512 WEST CENTER ST. - 649-1511  
NEW or USED

**MANCHESTER MOBILE STYLES**  
512 WEST CENTER ST. - 649-1511  
NEW or USED

**STANER ELECTRONICS**  
\$99.95  
277 ROAD STREET - PHONE 649-1124

**HONDA**  
SUPER SPORTS  
TAIL BIRES  
SCRAMBLERS  
VTEC OHV SUPERBROOM  
VTEC OHV SUPERBROOM  
VTEC OHV SUPERBROOM  
VTEC OHV SUPERBROOM

**EVERYTHING Electrical**  
MAY WE SERVE YOU?  
When your needs are electrical let us take care of them expertly.

**RENT**  
For Parties, Banquets, Receptions  
RICHARD MARTIN PAINTING CONTRACTOR  
No Job Too Small  
649-9285  
649-4411  
FREDERICKS AVENUE  
MANCHESTER

**RENT**  
QUALITY RENTALS  
GUARANTEED SERVICE  
T. ANGELO & CO.  
188 W. Main St., Manchester  
645-7434

**HIGH GRADE PRINTING**  
Job and Commercial Printing  
Prompt and Efficient Printing of All Kinds  
**Community Press**  
254 Broad St., Rear Telephone 645-5727

**DICK'S SHELL SERVICE**  
MECHANIC ON DUTY AT ALL HOURS  
Starters, Generators, Carburetors  
Domestic - Foreign Cars  
643-7068

**MANCHESTER Seafood**  
CHOICE VARIETY Quality Seafood  
43 OAK STREET  
TEL. 649-9597

**Reuben Plen's Texaco Station**  
381 Main Street  
Phone 643-9149  
Hydraulic Transmission Repairing  
All Work Guaranteed  
Tune-Up Lubrication Services  
We Give 24¢ Green Stamps

**TOURNAINE PAINTS**  
FOR BEST RESULTS  
**PAUL'S PAINT SUPPLY**  
645 MAIN STREET  
Tel. 649-0300

**AUTOMOTIVE SUPPLIES**  
PLUS MACHINE SHOP SERVICE  
**MANCHESTER AUTO PARTS**  
270 BROAD ST.

**JOHN'S ATLANTIC**  
188 E. CENTER ST. MANCHESTER  
649-8132  
BRAKES, TUNE-UPS  
MINOR REPAIRS  
JOHN KENSEL, Proprietor

**BERNIE'S TV Appliances**  
HOME OF FAMOUS BRANDS  
• Hotpoint • Maytag • Frigidaire • Zenith  
• RCA • Panasonic • Westinghouse • Holston  
• Sylvania • Dishwashers • Radios • Dryers • Etc.  
Open Even. till 9 P.M. at the Parkade Phone 645-0000

**McDonald's HAMBURGERS**  
Try 'em today  
look for the golden arches... McDonald's®  
46 WEST CENTER STREET  
SILVER LAKE EXTENSION





CLASSIFIED ADVERTISING

CLASSIFIED ADVERTISING DEPT. HOURS 8 A.M. to 4:30 P.M.

COPY CLOSING TIME FOR CLASSIFIED ADVT 1:30 P.M. DAY BEFORE PUBLICATION

Headline for Saturday and Monday at 4:30 p.m. Friday

YOUR COOPERATION WILL BE APPRECIATED DIAL 643-2711

Continued From Preceding Page

Houses For Sale 72

MANCHESTER - 7-7 Duplex... 47-800 - 7 ROOM Raised Ranch...

FOUR-BEDROOM CAPE!

With 1 1/2 acres of land, garage, and large horse stable...

HERITAGE HOUSE

646-2482

BIRCH ST - Compact 6 room bungalow...

MANCHESTER - Immaculate 7-room Colonial with 2-car garage...

LOVELY CAPE

Here is a home with today's essentials and tomorrow's possibilities...

OPEN SUNDAY

SOUTH FARMS

One of Manchester's finest locations of quality built homes...

MERRITT AGENCY

646-1180

TWO-FAMILY, 5-3 flat, garage, corner lot...

MANCHESTER - 5 and 5 two family three bedrooms...

117-800 OLDER home on Center St. Tremendous business location...

"T. L. C."

PHILBRICK AGENCY REALTORS

646-4200

A BEST BUY - BY BELFIORE

T.L.C. in real estate parlance means "Tender, Loving Care"

AN ASSUMABLE 6% MORTGAGE!!

Call us now. Remember, he who hesitates, etc.

THE WILLIAM E. BELFIORE AGENCY

Realtors 647-1413

Houses For Sale 72

PHILBRICK AGENCY

PROFESSIONAL man's Ranch, approximately 2,800 square feet of living space...

HENRY STREET

Prime location for this ideal family home...

8 1/2 ROOM Ranch, breezeway, garage, 1 1/2 baths...

LAND - 3 acres in Manchester

NEW LISTING - Overlaid 2 bedroom Colonial...

CIRCA 1740 large authentic Colonial, 11 rooms...

MANCHESTER - Price reduced on this quality 9 room, five-bedroom, two-year-old Garrison Colonial...

MANCHESTER - Charming 6 room quality Colonial, 9 rooms...

MANCHESTER - 5 and 5 two family three bedrooms...

117-800 OLDER home on Center St. Tremendous business location...

"T. L. C."

PHILBRICK AGENCY REALTORS

646-4200

A BEST BUY - BY BELFIORE

T.L.C. in real estate parlance means "Tender, Loving Care"

AN ASSUMABLE 6% MORTGAGE!!

Call us now. Remember, he who hesitates, etc.

THE WILLIAM E. BELFIORE AGENCY

Realtors 647-1413

BERRY'S WORLD

"I KNOW it's Halloween, Mr. President, but that's not funny!"

Houses For Sale 72

BUCKLEY SCHOOL AREA

New listing - Immaculate 6 room Cape, with full shed dormer, 1 1/2 baths...

2.7 ACRES beautiful view, 7 room Cape, with full shed dormer...

CONTEMPORARY 7 1/2 room Ranch, large lot in beautifully wooded setting...

NEW LISTING - Overlaid 2 bedroom Colonial...

CIRCA 1740 large authentic Colonial, 11 rooms...

MANCHESTER - Price reduced on this quality 9 room, five-bedroom, two-year-old Garrison Colonial...

MANCHESTER - Charming 6 room quality Colonial, 9 rooms...

MANCHESTER - 5 and 5 two family three bedrooms...

117-800 OLDER home on Center St. Tremendous business location...

"T. L. C."

PHILBRICK AGENCY REALTORS

646-4200

A BEST BUY - BY BELFIORE

T.L.C. in real estate parlance means "Tender, Loving Care"

AN ASSUMABLE 6% MORTGAGE!!

Call us now. Remember, he who hesitates, etc.

THE WILLIAM E. BELFIORE AGENCY

Realtors 647-1413

Houses For Sale 72

HERITAGE HOUSE

646-2482

HORSE LOVERS!

Combine country atmosphere with spacious living...

HERITAGE HOUSE

646-2482

Houses For Sale 72

NEW LISTING - Two-family, 4 room Colonial...

COUNTRY CLUB AREA

NEW LISTING - Two-family, 4 room Colonial...

MANCHESTER - Six room Cape, Verplank Colonial...

MANCHESTER - 4 bedroom Colonial, 1 1/2 baths...

OLDER Colonial bungalow, six large rooms...

MANCHESTER - 5 and 5, spacious two-family in excellent condition...

CIRCA 1740 large authentic Colonial, 11 rooms...

MANCHESTER - Price reduced on this quality 9 room, five-bedroom, two-year-old Garrison Colonial...

MANCHESTER - Charming 6 room quality Colonial, 9 rooms...

MANCHESTER - 5 and 5 two family three bedrooms...

117-800 OLDER home on Center St. Tremendous business location...

"T. L. C."

PHILBRICK AGENCY REALTORS

646-4200

A BEST BUY - BY BELFIORE

T.L.C. in real estate parlance means "Tender, Loving Care"

AN ASSUMABLE 6% MORTGAGE!!

Call us now. Remember, he who hesitates, etc.

THE WILLIAM E. BELFIORE AGENCY

Realtors 647-1413

Houses For Sale 72

HERITAGE HOUSE

646-2482

HORSE LOVERS!

Combine country atmosphere with spacious living...

HERITAGE HOUSE

646-2482

Houses For Sale 72

NEW LISTING - Two-family, 4 room Colonial...

COUNTRY CLUB AREA

NEW LISTING - Two-family, 4 room Colonial...

MANCHESTER - Six room Cape, Verplank Colonial...

MANCHESTER - 4 bedroom Colonial, 1 1/2 baths...

OLDER Colonial bungalow, six large rooms...

MANCHESTER - 5 and 5, spacious two-family in excellent condition...

CIRCA 1740 large authentic Colonial, 11 rooms...

MANCHESTER - Price reduced on this quality 9 room, five-bedroom, two-year-old Garrison Colonial...

MANCHESTER - Charming 6 room quality Colonial, 9 rooms...

MANCHESTER - 5 and 5 two family three bedrooms...

117-800 OLDER home on Center St. Tremendous business location...

"T. L. C."

PHILBRICK AGENCY REALTORS

646-4200

A BEST BUY - BY BELFIORE

T.L.C. in real estate parlance means "Tender, Loving Care"

AN ASSUMABLE 6% MORTGAGE!!

Call us now. Remember, he who hesitates, etc.

THE WILLIAM E. BELFIORE AGENCY

Realtors 647-1413

Houses For Sale 72

HERITAGE HOUSE

646-2482

HORSE LOVERS!

Combine country atmosphere with spacious living...

HERITAGE HOUSE

646-2482

Houses For Sale 72

NEW LISTING - Two-family, 4 room Colonial...

COUNTRY CLUB AREA

NEW LISTING - Two-family, 4 room Colonial...

MANCHESTER - Six room Cape, Verplank Colonial...

MANCHESTER - 4 bedroom Colonial, 1 1/2 baths...

OLDER Colonial bungalow, six large rooms...

MANCHESTER - 5 and 5, spacious two-family in excellent condition...

CIRCA 1740 large authentic Colonial, 11 rooms...

MANCHESTER - Price reduced on this quality 9 room, five-bedroom, two-year-old Garrison Colonial...

MANCHESTER - Charming 6 room quality Colonial, 9 rooms...

MANCHESTER - 5 and 5 two family three bedrooms...

117-800 OLDER home on Center St. Tremendous business location...

"T. L. C."

PHILBRICK AGENCY REALTORS

646-4200

A BEST BUY - BY BELFIORE

T.L.C. in real estate parlance means "Tender, Loving Care"

AN ASSUMABLE 6% MORTGAGE!!

Call us now. Remember, he who hesitates, etc.

THE WILLIAM E. BELFIORE AGENCY

Realtors 647-1413

Houses For Sale 72

HERITAGE HOUSE

646-2482

HORSE LOVERS!

Combine country atmosphere with spacious living...

HERITAGE HOUSE

646-2482

Houses For Sale 72

NEW LISTING - Two-family, 4 room Colonial...

COUNTRY CLUB AREA

NEW LISTING - Two-family, 4 room Colonial...

MANCHESTER - Six room Cape, Verplank Colonial...

MANCHESTER - 4 bedroom Colonial, 1 1/2 baths...

OLDER Colonial bungalow, six large rooms...

MANCHESTER - 5 and 5, spacious two-family in excellent condition...

CIRCA 1740 large authentic Colonial, 11 rooms...

MANCHESTER - Price reduced on this quality 9 room, five-bedroom, two-year-old Garrison Colonial...

MANCHESTER - Charming 6 room quality Colonial, 9 rooms...

MANCHESTER - 5 and 5 two family three bedrooms...

117-800 OLDER home on Center St. Tremendous business location...

"T. L. C."

PHILBRICK AGENCY REALTORS

646-4200

A BEST BUY - BY BELFIORE

T.L.C. in real estate parlance means "Tender, Loving Care"

AN ASSUMABLE 6% MORTGAGE!!

Call us now. Remember, he who hesitates, etc.

THE WILLIAM E. BELFIORE AGENCY

Realtors 647-1413

Houses For Sale 72

HERITAGE HOUSE

646-2482

HORSE LOVERS!

Combine country atmosphere with spacious living...

HERITAGE HOUSE

646-2482

Houses For Sale 72

NEW LISTING - Two-family, 4 room Colonial...

COUNTRY CLUB AREA

NEW LISTING - Two-family, 4 room Colonial...

MANCHESTER - Six room Cape, Verplank Colonial...

MANCHESTER - 4 bedroom Colonial, 1 1/2 baths...

OLDER Colonial bungalow, six large rooms...

MANCHESTER - 5 and 5, spacious two-family in excellent condition...

CIRCA 1740 large authentic Colonial, 11 rooms...

MANCHESTER - Price reduced on this quality 9 room, five-bedroom, two-year-old Garrison Colonial...

MANCHESTER - Charming 6 room quality Colonial, 9 rooms...

MANCHESTER - 5 and 5 two family three bedrooms...

117-800 OLDER home on Center St. Tremendous business location...

"T. L. C."

PHILBRICK AGENCY REALTORS

646-4200

A BEST BUY - BY BELFIORE

T.L.C. in real estate parlance means "Tender, Loving Care"

AN ASSUMABLE 6% MORTGAGE!!

Call us now. Remember, he who hesitates, etc.

THE WILLIAM E. BELFIORE AGENCY

Realtors 647-1413

Houses For Sale 72

HERITAGE HOUSE

646-2482

HORSE LOVERS!

Combine country atmosphere with spacious living...

HERITAGE HOUSE

646-2482

Houses For Sale 72

NEW LISTING - Two-family, 4 room Colonial...

COUNTRY CLUB AREA

NEW LISTING - Two-family, 4 room Colonial...

MANCHESTER - Six room Cape, Verplank Colonial...

MANCHESTER - 4 bedroom Colonial, 1 1/2 baths...

OLDER Colonial bungalow, six large rooms...

MANCHESTER - 5 and 5, spacious two-family in excellent condition...

CIRCA 1740 large authentic Colonial, 11 rooms...

MANCHESTER - Price reduced on this quality 9 room, five-bedroom, two-year-old Garrison Colonial...

MANCHESTER - Charming 6 room quality Colonial, 9 rooms...

MANCHESTER - 5 and 5 two family three bedrooms...

117-800 OLDER home on Center St. Tremendous business location...

"T. L. C."

PHILBRICK AGENCY REALTORS

646-4200

A BEST BUY - BY BELFIORE

T.L.C. in real estate parlance means "Tender, Loving Care"

AN ASSUMABLE 6% MORTGAGE!!

Call us now. Remember, he who hesitates, etc.

THE WILLIAM E. BELFIORE AGENCY

Realtors 647-1413

Houses For Sale 72

HERITAGE HOUSE

646-2482

HORSE LOVERS!

Combine country atmosphere with spacious living...

HERITAGE HOUSE

646-2482

Houses For Sale 72

NEW LISTING - Two-family, 4 room Colonial...

COUNTRY CLUB AREA

NEW LISTING - Two-family, 4 room Colonial...

MANCHESTER - Six room Cape, Verplank Colonial...

MANCHESTER - 4 bedroom Colonial, 1 1/2 baths...

OLDER Colonial bungalow, six large rooms...

MANCHESTER - 5 and 5, spacious two-family in excellent condition...

CIRCA 1740 large authentic Colonial, 11 rooms...

MANCHESTER - Price reduced on this quality 9 room, five-bedroom, two-year-old Garrison Colonial...

### The Baby Has Been Named



**Chappell, Paul Joseph**, son of David Sr. and Lola LaVallee Chappell, 51 Forbes St., East Hartford. He was born Oct. 10 at Manchester Memorial Hospital. His paternal grandparents are Mr. and Mrs. Bernard Chappell, Fox Trail, Coventry. He has a brother, David, Jr., 1.

**Gaetano David James**, son of Nunzio and Gertraud Notzke Gaetano, 11 Range Hill Rd. Dr., Vernon. He was born Oct. 8 at Rockville General Hospital. His maternal grandparents are Mr. and Mrs. Rhineolt Notzke, Berlin, Germany. His paternal grandparents are Mr. and Mrs. Angelo Gaetano, Rome, N.Y.

**Lynch, Michael Shawn**, son of Robert and Cora Drake Lynch, Beverly Dr., Coventry. He was born Oct. 13 at Manchester Memorial Hospital. His maternal grandmother is Mrs. Edna Drake, Selma, Ala. His paternal grandparents are Mr. and Mrs. Francis Lynch, 18 Thomas Dr., Manchester. He has two sisters, Theresa Ann and Leita Dee.

**Huck, Gerald Alan**, son of David G. and Catherine Nelligan Huck, 441 Main St., Box 911, East Hartford. He was born Oct. 15 at Manchester Memorial Hospital. His paternal grandparents are Mr. and Mrs. Ben A. Huck, 51 Turnbull Rd., Manchester.

**McKusick, Dawn Diane**, daughter of Peter and Diane Corcoran McKusick, 6 Parkwest Dr., Rockville. She was born Oct. 14 at Manchester Memorial Hospital. Her maternal grandparents are Mr. and Mrs. Frank Corcoran, Jackson Heights, N.Y. Her paternal grandparents are Mr. and Mrs. Durgan McKusick, Milo, Maine.

**Hinkel, Kristen Lea**, daughter of Kenneth and Donna Tucker Hinkel, 45 Bristol St., Willimantic. She was born Oct. 14 at Manchester Memorial Hospital. Her maternal grandparents are Mr. and Mrs. Herbert Palmer, Columbia. Her paternal grandparents are Mr. and Mrs. Henry Ryan, Willimantic. She has two brothers, Tony, 6, and Timmy, 4.

**Sayess, Stephen Perry**, son of Zakl and Susan Perry Sayess, 45 Goodwin St., Manchester. He was born Oct. 14 at Manchester Memorial Hospital. His maternal grandparents are Mr. and Mrs. Manuel R. Perry, Gloucester, Mass. His paternal grandparents are Mr. and Mrs. M.A. Sayess, Somerville, Mass. He has a brother, Thomas, 16 months.

**Jordan, Randolph John**, son of Gerald and Norma Orlovski Jordan, 11 Wilshire Rd., Vernon. He was born Oct. 12 at Manchester Memorial Hospital. His maternal grandparents are Mr. and Mrs. John Orlovski, 11 Wilshire Rd., Vernon. His paternal grandmother is Mrs. Anne Jordan, New York, N.Y.

**Bourque, Anne Marie Constance**, daughter of Roger and Annette DeBlais Bourque, 18 Hickory Dr., Coventry. She was born Oct. 12 at Manchester Memorial Hospital. Her maternal grandmother is Mrs. Anne DeBlais Lewiston, Maine. Her maternal grandparents are Mr. and Mrs. Albert Bourque, Lewiston, Maine. She has two brothers, Roger Jr., 2½, and Robert, 1½.

**Lukas, Todd Stuart**, son of Charles Jr. and Irene Steffan Lukas, 80 Mather St., Manchester. He was born Sept. 9 at St. Francis Hospital. His maternal grandparents are Mr. and Mrs. Charles Steffan, Meriden. His paternal grandparents are Mr. and Mrs. Charles Lukas Sr., 428 Hilliard St., Manchester. He has two brothers, Mark, 2½, and Greg, 1½.

**Morano, Anne Louise**, daughter of Edward and Laura Lento Morano, 19½ Eldridge St., Manchester. She was born Oct. 15 at Manchester Memorial Hospital. Her paternal grandfather is Alessandro Morano, 17½ Eldridge St. She has three brothers, Michael, 14, David, 11, and John, 10; and a sister, Mary, 7.

**Morse, Russell Gifford**, son of Gifford and Nora Brown Morse, 142 High St., Rockville. He was born Oct. 7 at Rockville General Hospital. His maternal grandparents are Mr. and Mrs. Ralph Brown, Halcottville, N.Y. His paternal grandparents are Mr. and Mrs. H. Grant Morse, Denver, N.Y.

**Strimike, Robert Allan Jr.**, son of Robert Allan Sr. and Jean Newth Strimike, 470 Woodbridge St., Manchester. He was born Sept. 30 at St. Francis Hospital. His maternal grandparents are Mr. and Mrs. Paul E. Newth, 16 Radding St., Manchester. His paternal grandparents are Mr. and Mrs. Joseph Strimike, 130 Tanner St., Manchester.

**Tully, Suzanne Denise**, adopted daughter of Frederick and Maryann Mucio Tully, 1408 Nineteenth Ave., Eldora, Iowa. She was born Oct. 3 and arrived at her new home on Oct. 5. Her maternal grandparents are Mr. and Mrs. Joseph Mucio, 39 Teresa Rd., Manchester. Her paternal grandparents are Joseph Tully, Central Falls, R.I., and Mrs. Emily Tully, 16 Seymour St., Manchester. She has two adopted brothers, Michael, 4, and David, 2.

DAVE REPRESENTS THE TAXPAYER YEAR ROUND

not only before an election!

STATE SENATE  
**ODEGARD**  
G.O.P.  
ODEGARD FOR SENATE COMM.  
G. Kasehl, Treas.

Start knitting, Manchester! We have the most beautiful yarn in the world in our new Yarn Department. (Art Needlework, too!) Pilgrim Mills quality, of course... at our famous low prices! Browse any day Monday through Saturday, from 10 A.M. 'til 9:30 P.M.

**PILGRIM MILLS**  
FABRIC DEPARTMENT STORES  
MANCHESTER 434 Oakland Street. (Exit 94 off I-86)

# TREASURE CITY

## DISCOUNT DEPARTMENT STORES

OPEN DAILY & SUNDAY  
10 A.M. — 10 P.M.  
CLOSED SATURDAY

# DOUBLE DISCOUNTS

THESE DOUBLE DISCOUNT PRICES AND COUPONS SUNDAY ONLY, NOV. 1 — ALL 4 STORES

<p><b>LADIES' QUILTED NYLON JACKETS</b> Reg. \$14. Sunday Only <b>\$11.00</b></p> <p>Sizes 8 to 16 in brown, pastel blue, navy and white. Belted style with two large pockets. Polyester lined for extra warmth.</p>	<p><b>LADIES' LONG SLEEVE SHIRTS</b> Reg. \$2.00 <b>\$1.44</b></p> <p>New fall colors and white in sizes 32 to 38. New long collars, 2-button cuffs, 65% polyester, 35% cotton perma press material.</p>	<p><b>MEN'S PILE LINED C.P.O. JACKETS</b> Reg. \$11.00 <b>\$8.88</b></p> <p>Pile lined for extra warmth. 2 pockets, full cut, in new fall plaids. Sizes S, M, L.</p>	<p><b>BOYS' LINED JACKETS and C.P.O. JACKETS</b> Reg. \$9.00 <b>\$6.88</b></p> <p>Your choice of a double breasted, quilt-lined jacket or pile lined C.P.O. jacket at this low, low price. Sizes to 18.</p>
<p><b>GIRLS' WARM CARDIGAN SWEATERS</b> Reg. \$3. and \$4. <b>\$2.00</b></p> <p>New fall colors and knits in warm washable sweaters. Sizes to 14.</p>	<p><b>LADIES' FLANNELETTE SLEEPWEAR</b> Reg. \$2.27 <b>2 FOR \$3.00</b></p> <p>New neat prints in warm flannelette pajamas and gowns. Sizes S, M, L.</p>	<p><b>SPECIAL PURCHASE OF A "FAMOUS MAKER" MEN'S SLACKS</b> For Dress or Casual Wear Values to \$13. <b>\$3.00</b></p> <p>Permanent press blends. Belt loops, scoop front pockets. In fall colors, sizes 28 to 40. Mfgs. name cannot be mentioned at this low, low price.</p>	<p><b>MEN'S ALL WEATHER RAINCOATS</b> Reg. \$16. <b>\$12.00</b></p> <p>Single breasted, quilt-lined, trench coat style with slash pockets. In olive and navy. Sizes 34 - 44.</p>
<p><b>LADIES' BRIEF STYLED PANTIES</b> Reg. 58c Each <b>3 FOR 99c</b></p> <p>Nylon and acetate materials in pastel colors and white. Sizes 5, 6, 7. SUNDAY, NOV. 1st ONLY</p>	<p><b>PKG. OF 5 STAINLESS STEEL WILKINSON BLADES</b> Reg. 73c <b>3 PKG. 79c</b></p> <p>Super sword edge. Limit 3 pkgs. with coupon. While 400 last in each store. SUNDAY, NOV. 1st ONLY</p>	<p><b>BLUE DOT SYLVANIA FLASH CUBES</b> Reg. \$1.19 <b>69c</b></p> <p>3-Cube Pack — Limit 2 While 300 last in each store. SUNDAY, NOV. 1st ONLY</p>	<p><b>PROCTOR SILEX Model 20214 TOASTER</b> Reg. \$7.97 <b>\$5.88</b></p> <p>2-Slice. Automatic release, color selector. SUNDAY, NOV. 1st ONLY</p>
<p><b>72x90 THERMAL BLANKETS</b> Reg. \$3.97 <b>\$2.99</b></p> <p>Solid colors and striped pattern. Satin binding, machine washable.</p>	<p><b>LUXURY MUSLIN — TWIN OR FULL SIZE SHEETS</b> Reg. \$2.47 and \$2.67—Your Choice <b>\$1.77</b></p> <p>Beautiful floral patterns. Stock up now at this low, low price.</p>	<p><b>FULL SIZE BATH TOWELS</b> Reg. \$1.27 and \$1.37 <b>77c</b></p> <p>Terry and velour in gold, green, red, blue and pink. Slight imperfections, will not affect the wear.</p>	<p><b>LARGE 21x36 HEAVY SHAG RUGS</b> Reg. \$3.97 <b>\$2.77</b></p> <p>Beautiful decorator colors, non-slip back, deep 100% nylon shag pile. Machine washable.</p>
<p>Large 18-oz. Economy Size <b>MICRIN MOUTHWASH &amp; GARGLE</b> Reg. \$1.19 <b>69c</b></p>	<p>"HELENE CURTIS" Large Economy 13-oz. <b>HAIR SPRAY</b> Reg. 59c <b>39c</b> Reg. and Hard-to-Hold</p>	<p><b>MODACRYLIC MIA BOB WIG</b> Reg. \$7.99 <b>\$5.00</b></p> <p>Wash and wear in all the wanted colors and frosted.</p>	<p>"JULIETTE" 8 <b>TRANSISTOR RADIO</b> Reg. \$5.97 <b>\$3.88</b></p> <p>Earphone and carrying case with handle included.</p>
<p>Set of 8 Ft. <b>ALUMINUM BOOSTER CABLES</b> Reg. \$1.97 <b>\$1.00</b></p> <p>For easy and safe starting of stalled vehicles.</p>			

**NEWINGTON**  
3375 BERLIN TURNPIKE

**WETHERSFIELD**  
1130 SILAS DEANE HIGHWAY

**BLOOMFIELD**  
1051 BLUE HILLS AVENUE

**MANCHESTER**  
PARKADE SHOPPING